



## CHIEF MT-2212-S

CHIEF Products help people realize -  
How Easy it is to Handling Refrigerant Systems  
(**R-22** · **R-134a**)



### FEATURES :

- ◆ Economic & Portable.
- ◆ Refrigerant Recovery for 5USRT~200USRT Chiller and Refrigerator.
- ◆ For TON-Tank Residual Refrigerant Recovery at Refrigerant Station.
- ◆ For A/C Repaired Shop in Refrigerant Handling Process.

(※1USRT=3024 Kcal/H, 12000 BTU/H)

### SPECIFICATIONS

(Air-cooling Type)

Model No.	MT-2212-S
Dimensions	842 <sup>L</sup> ×442 <sup>W</sup> ×680 <sup>H</sup> mm
Weight	86.5 KG
Compressor Input Power	1.86 KW (2.5 HP)
Vapor Recovery Rate	0.5~1.0 Kg/M
Liquid Recycling Rate	1.2~1.8 Kg/M
Starting Control	With Automatic Equalizer
Purge Design	Auto & Manual
Filter	Inlet & Outlet
Oil Drain	Auto

Recovery Rate: Base on suction pressure above 10 psig.

MT-2212-S machine is designed to Recovery/Recycling refrigerant and Liquid Refrigerant flushing process for refrigeration systems.



<b>Voltage</b>	1Ø220V, 60/50HZ.
<b>Purge Tank</b>	SUS-304 material.
<b>Accumulator</b>	SUS-304 material, with perfect process Heat-Exchanger design.
<b>Safety Equipment</b>	Low/High pressure control.
	Leakage No-Fuse-Breaker control.
	Safety Ruptures plug.
	Liquid-Back control
	Electric Over-Load protection.



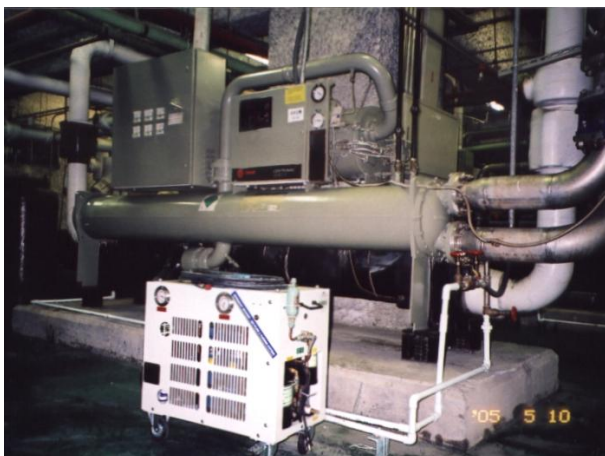
CHIEF® Recovery/Recycling unit will be fit for Vapor/Liquid recovery , liquid refrigerant recycling and flushing purpose in industry refrigerator system.

CHIEF® unit accomplishes this by withdrawing liquid mixed with oil and particles from the evaporator, condenser, accumulator and then distillation/compressing/condensing refrigerant, and discharging into the pure storage tank.

DON'T WORRIES ABOUT THE  
COMPRESSOR WOULD BE DAMAGED  
DURING OPERATING LIQUID  
REFRIGERANT RECOVERY.



Refrigerant Recovery/recycling process at chiller room in Taiwan.



Refrigerant recovery and Recycling process at Metro Station.