

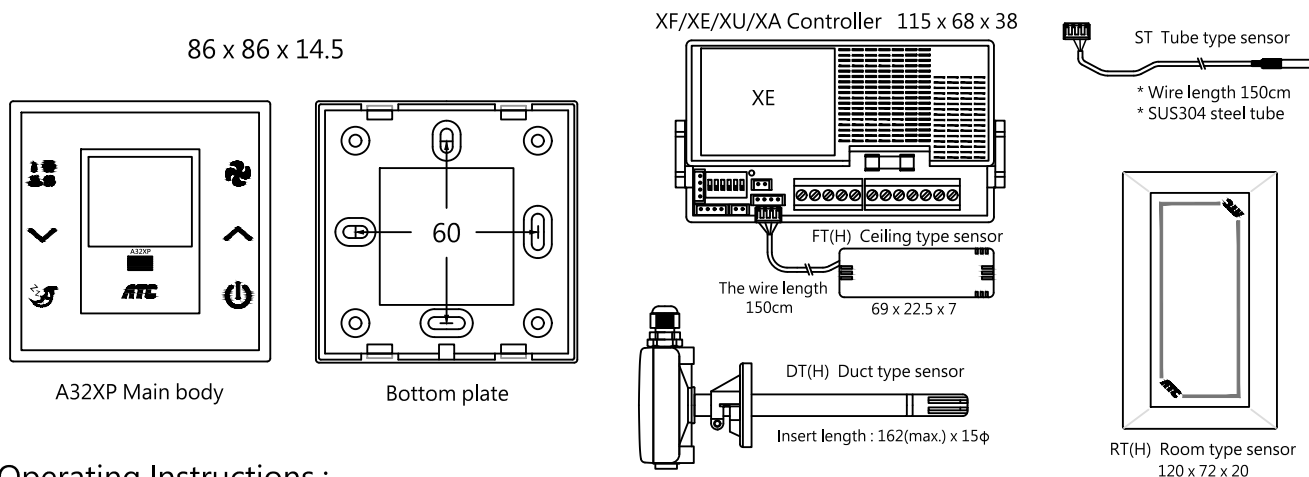
A32XP LCD Digital Thermostat

Features :

- Standard European size.
- Adjustable lighting level LCD screen.
- Intuition graphic touch keys.
- 0.1°C Temperature accuracy.
- Smart progressive speed up/down keys.
- The LCD panel auto fits 1 or 3 section or modulating controllers.
- Fusion 3 speed fast & 20 speed fine-tuning for the XE model.
- Outfit RS-485 port operated by the MODBUS RTU open protocol.
- Optional humidity sensor for temperature and humidity control.



Dimensions : (L x W x H) unit mm



Operating Instructions :

Power ON/OFF

- Touch the key once will start or stop the air-conditioning operating.

Temp. adjust

- Touch the key to raises 0.1°C or the key to reduce 0.1°C, Keep touch the key to raises or the key to reduce 0.1°C quickly.

Back-light mode

- Keep touch the & key till the beeper sound will change the back-light mode into the lighting 12 seconds mode, Once again will back to the on-bright/off-dark mode.

Fan speed

- Touch the key once to select fan speed as following order :
Auto > High > Middle > Low > Auto circling.
- ★ When into the fan select mode, once touch the key to raise 1 section till speed 20 (maximum) or the key to reduce 1 section till speed 1 (minimum), this function only for some controllers with 20 speed.
- ★ Some of the air-conditioning system may not allow into some inappropriate speed.

Mode select

- Touch the key will change the operating mode as following order :
Cool > humidity > Fan only (> Heat)(>Auto)>Cool circling.
- ★ If the humidity sensor was equipped,the screen can show and set the humidity level from 20%~90% in the humidity mode, If doesn't, the "Hd" will shown on the screen.
- ★ If the panel connected with the cool/heat controller,it will be allowed to select heat mode, connecting with the 4-pipe controller will be allowed to select auto mode.

Timer on/off

- Touch the & key when power-on will into the timer-off mode, touch the & key when power-off will into the timer-on mode, use the & key to input or modify the hours, it must be touch the & key once again to start the timer.

Sleep mode

- Touch the key while cooling mode will enable the sleeping mode ,
The setting temperature will rise 1°C after half hour and rise 1°C again after one hour.
- ★ Keep touch the key over 5 second when the A/C is power-on will into the back-light brightness adjust mode, Touch the & key to select most favorite brightness.

Lock & Unlock

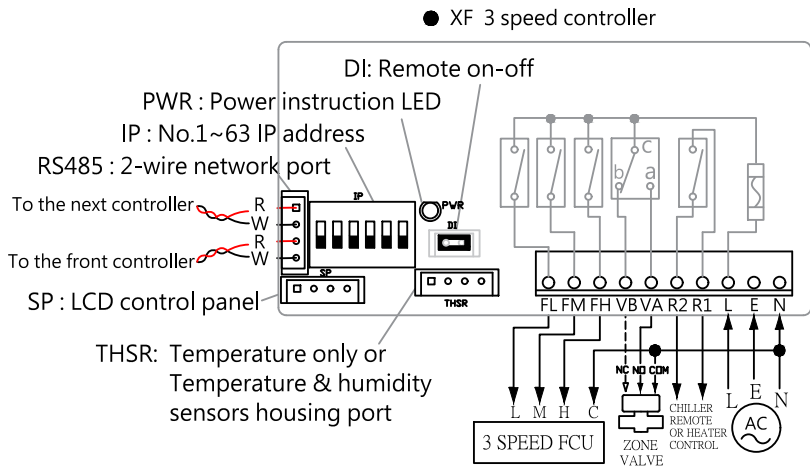
- Keep touch the key until the lock sign appear will lock up all of keys except the key, Repeat once till the lock sign disappear will unlock the keys.

★ The difference of the display and setting degree effected by the air-conditioner's ability or the change of loading ,
There is no any guarantee to whether the same value or the tolerance degree about this thermostat.

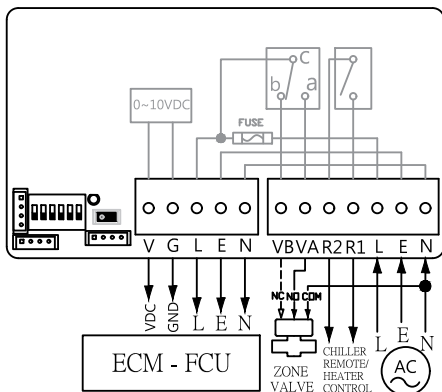
● Wiring diagram :

NOTICE

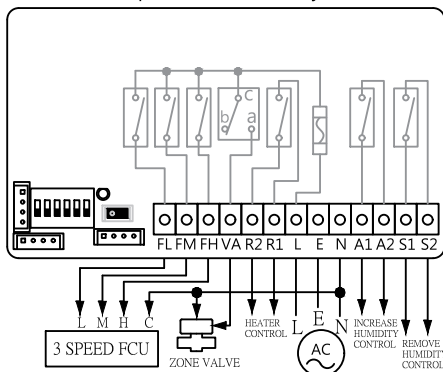
- ✱ The sensor must be position in the return air path, Never put into the drain plate or close to the coil / motor / vent air positions etc.
- ✱ Remove the unused wire connectors, But the DI must be keep it on for actuate the power on/off.
- ✱ No need to set IP if the RS485 unused, Implement the power reset when changed the IP address.
- ✱ The RS-485 cable must be used UL2464 AWG22 x2C shield cable according with " one-in & one-out " rule connecting with all of the devices, Never set any branch in the halfway.
- ✱ When control with the direct expense split A/C, Chose the DX controller, Use VA for the outdoor unit & R1/R2 to control with the 4-way valve.



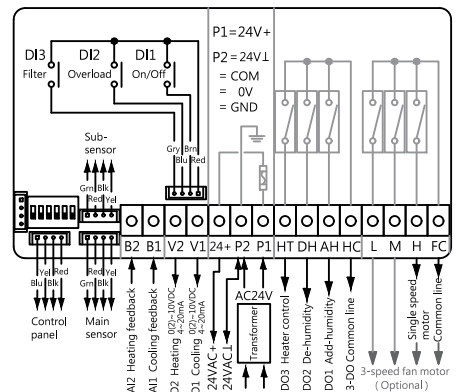
- XE EC motor controller



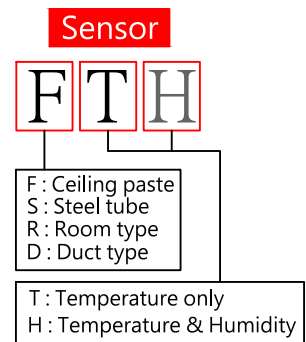
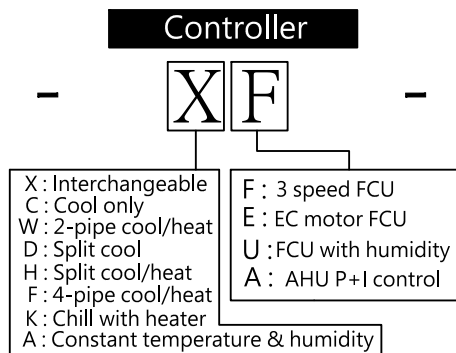
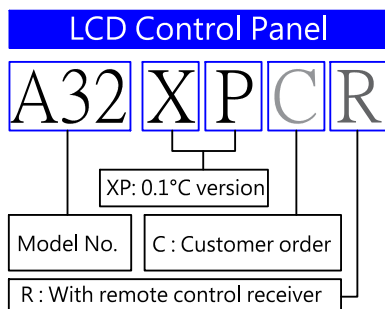
- XU 3 speed with humidity controller



- XA AHU P+I controller



● How to order :



● Technical Specifications :

Input power	AC 90~240V, 50/60Hz general ; AC24V(XA)	Support fan motor	3-speed motor (XF) / EC motor (XE)
Display type	LCD with LED back-light screen	RPM control (XE)	0~10VDC correspond 0~1200 RPM
Operation key	Graphic CVD touch key	Air volume control	3 speed (XF) / 3 & 20 speed (XE) auto/manual
Control panel	European size 86x86 mm	Communication wire	Panel vs controller: 0.5mm² x 4C; longest 100 meters
Temp. set range	5.0~35.0 °C (Original) -50.0~120.0 °C (Max.)	RS485 protocol	Modbus RTU 9600 or 19200 bps N,8,1
Temp. resolution	0.1 °C	Remote control	Infrared receiver (Fit for R30RC)
Temp. detect range	-55.0~125.0 °C	Humidity sensor	Integrated circuit module
Operation mode	Cool / Humidity / Fan only (/ Heat)(/ Auto)	Humidity set range	20 ~ 90 %
Protect class	Control panel: IP53 Tube type sensor: IP65	Humidity detect range	20 ~ 90 %
Output capability	3-speed : 5A/220VAC ; Valve / Chiller : 3A/220VAC	Humidity resolution	1 %
Temp. sensor	Digital thermometer	* These items in the red frame are the optional accessories. * The specifications maybe changed without notice. 2022.11 V1.4	

* These items in the red frame are the optional accessories.

* The specifications maybe changed without notice. 2022.11 V1.4