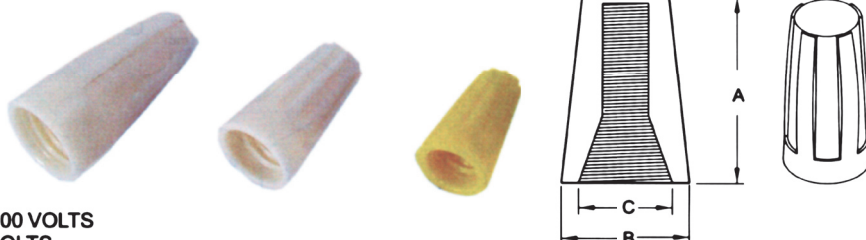




## SCREW-ON WIRE NUT CONNECTORS (WITHOUT SPRING)



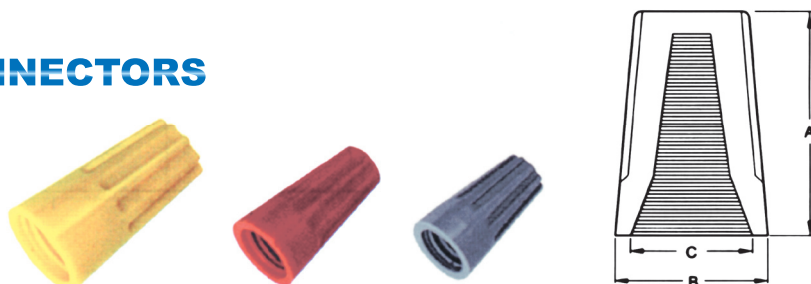
**TEMPERAYURE RATING :** 105°C

**ELECTRICAL RATING:** S1, M1, RATED AT 300 VOLTS  
L1 RATED AT 600 VOLTS

**APPROVED:** UL CSA

| ITEM NO. | SUITABLE<br>WIRE<br>NO.&A.W.G. | DIMENSION <sup>inch</sup> <sub>mm</sub> |      |      |      |      |     | COLOR  | Q'TY<br>BOX |
|----------|--------------------------------|---|------|------|------|------|-----|--------|-------------|
|          |                                | A                                       |      | B    |      | C    |     |        |             |
| S1       | MIN #24X2<br>MAX #16X1+#18X2   | .570                                    | 14.5 | .339 | 8.6  | .256 | 6.5 | YELLOW | 1000        |
| M1       | MIN #20X3<br>MAX #16X3         | .677                                    | 17.2 | .394 | 10.0 | .299 | 7.6 | IVORY  | 1000        |
| L1       | MIN #22X3<br>MAX #16X3         | .874                                    | 22.2 | .437 | 11.1 | .358 | 9.1 | IVORY  | 500         |

## SCREW-ON WIRE NUT CONNECTORS (WITH SPRING INSERT)



**TEMPERAYURE RATING :** 105°C

**ELECTRICAL RATING :** 300 VOLTS

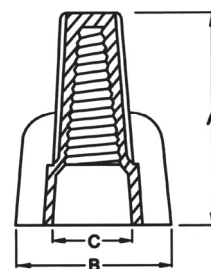
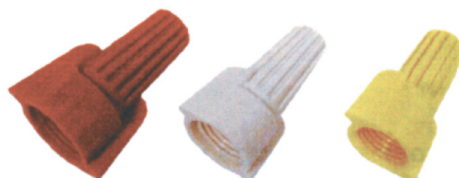
**APPROVED:** UL CSA

WITH SPRING INSERT

| ITEM NO. | SUITABLE<br>WIRE<br>NO.&A.W.G.     | DIMENSION <sup>inch</sup><br>mm |      |      |      |      |      | COLOR                | Q'TY<br>BOX |
|----------|------------------------------------|---------------------------------|------|------|------|------|------|----------------------|-------------|
|          |                                    | A                               |      | B    |      | C    |      |                      |             |
| WN1      | MIN #20X1+#22X1<br>MAX #16X2       | .598                            | 15.2 | .339 | 8.6  | .264 | 6.7  | GREY<br>ORANGE       | 1000        |
| WN2      | MIN #20X3<br>MAX #16X3             | .693                            | 17.6 | .386 | 9.8  | .291 | 7.4  | BLUE<br>ORANGE       | 1000        |
| WN3      | MIN #20X3<br>MAX #16X3+#18X1       | .866                            | 22.0 | .472 | 12.0 | .390 | 9.9  | ORANGE<br>YELLOW     | 500         |
| WN4      | MIN #14X1+#18X1<br>MAX #14X4+#18X1 | .965                            | 24.5 | .551 | 14.0 | .433 | 11.0 | YELLOW<br>ORANGE RED | 500         |
| WN6      | MIN #14X2<br>MAX #10X2+#12X2       | 1.079                           | 27.4 | .661 | 16.8 | .500 | 12.7 | RED                  | 250         |
| WN8      | MIN #12X3<br>MAX #10X4             | 1.286                           | 32.2 | .720 | 18.3 | .504 | 12.8 | GREY                 | 200         |



## SCREW-ON WIRE NUT CONNECTORS (WING TYPE WITH SPRING INSERT)



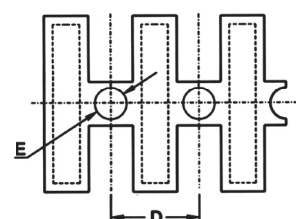
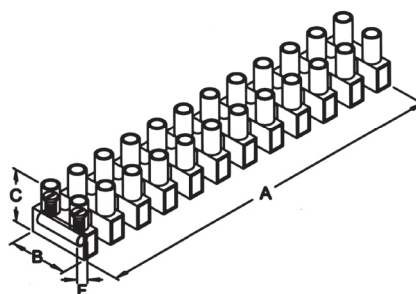
TEMPERATURE RATING : 105°C  
ELECTRICAL RATING : 600 VOLTS  
APPROVED:  

WITH SPRING INSERT

TABLE 1: DIMENSIONS

| ITEM NO. | SUITABLE WIRE NO.&A.W.G. | DIMENSION <sup>inch</sup> <sub>mm</sub> |      |      |      |      |      | COLOR  | Q'TY BOX |
|----------|--------------------------|---|------|------|------|------|------|--------|----------|
|          |                          | A                                       |      | B    |      | C    |      |        |          |
| Y11      | MIN #18X2<br>MAX #14X3   | 1.016                                   | 25.8 | .717 | 18.2 | .386 | 9.8  | YELLOW |          |
| Y12      | MIN #22X3<br>MAX #10X3   | 1.142                                   | 29.0 | .720 | 18.3 | .457 | 11.6 | TAN    |          |
| Y13      | MIN #16X3<br>MAX #12X4   | 1.252                                   | 31.8 | .906 | 23.0 | .531 | 13.5 | RED    |          |

## TERMINALS BLOCK STRIP



TEMPERATURE RATING : 105°C  
ELECTRICAL RATING : NYLON 66



| ITEM NO. | WIRE RANGE                              | AMP | VOLT | SCREW  | DIMENSION <small>inch mm</small> |              |              |              |             |             | Q'TY BOX |
|----------|---|-----|------|--------|----------------------------------|--------------|--------------|--------------|-------------|-------------|----------|
|          |   |     |      |        | A                                | B            | C            | D            | E           | F           |          |
| PA8      | 22-16 A.W.G.<br>0.5-1.5 mm <sup>2</sup> | 6   | 400  | M2.6X5 | 3.772<br>95.8                    | .642<br>16.3 | .524<br>13.3 | .315<br>8.0  | .114<br>2.9 | .114<br>2.9 |          |
| PA10     | 16-14 A.W.G.<br>1.5-2.5 mm <sup>2</sup> | 10  | 400  | M3X6   | 4.626<br>117.5                   | .795<br>20.2 | .622<br>15.8 | .394<br>10.0 | .142<br>3.6 | .126<br>3.2 |          |