

## Profibus Connection Cable AK70 / AK71

### AK70:

#### **Profibus output connection cable with right angle connector M12x1 (male)**

for all Metis pyrometers with internal Profibus



### AK71:

#### **Profibus input connection cable with right angle connector M12x1 (female)**

for all Metis pyrometers with internal Profibus



### Order Numbers

- |         |  |
|---------|--|
| AK70-06 | Profibus output connection cable with right angle connector (male), length 6 m   |
| AK70-XX | Profibus output connection cable with right angle connector (male), (specify length XX in m, XX= 6, 10, 15, 20, 30 m)  |
| AK71-06 | Profibus input connection cable with right angle connector (female), length 6 m  |
| AK71-XX | Profibus input connection cable with right angle connector (female), (specify length XX in m, XX= 6, 10, 15, 20, 30 m) |

Sensortherm reserves the right to make changes in scope of technical progress or further developments.

## Profibus-DP Terminator AK81

**AK81:**

**Terminator  
with connector M12 x 1 (male)**

for all Metis pyrometers with internal Profibus



Picture may vary

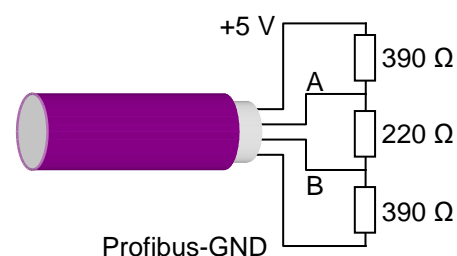
**Ref.-No.:**  
AK81-00

**Description:**

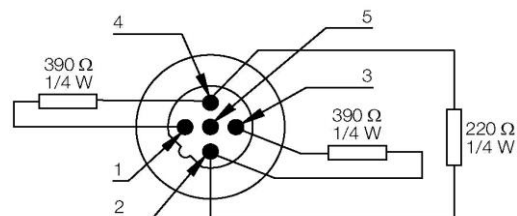
Terminators with connector M12x1 in durable cast polyurethane housing;  
operating temperature up to 80°C

If no further Profibus instrument is connected to the output, the output must be terminated with resistors. The figure shows the Profibus-DP circuit with terminating resistors.

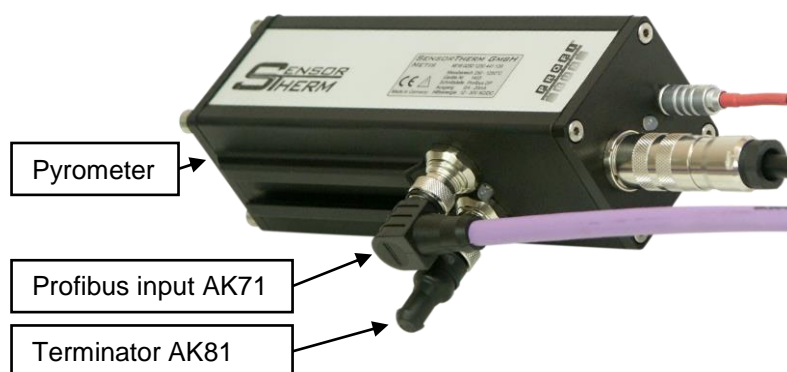
### Circuit



### In the Connector



### Connection Example



Sensortherm reserves the right to make changes in scope of technical progress or further developments.