



# NEW PRODUCTS

2019 / 2020

## Our pulses for innovations



The Kübler Group belongs today to the leading specialists worldwide in the fields of position and motion sensors, functional safety, counting and process technology and transmission technology.

Founded in the year 1960 by Fritz Kübler, the family business is now led by the next generation of Gebhard and Lothar Kübler.

Ten international group members and distributors in more than 50 countries offer local product know-how, service and advice throughout the world.

Innovative product and sector solutions, as well as solutions for functional safety and a high level of service, are the reasons behind our global success.

The strict focus on quality ensures the highest levels of reliability and a long service life for our products in the field.

Over 490 dedicated people worldwide make this success possible and ensure that customers can continue to place their trust in our company.





# Kübler Service for worldwide planning reliability



## 24one

### 24one delivery promise

Manufacturing in 24 hours. For orders placed on working days before 9 AM, the product will be ready for dispatch on that same day. 24one is limited to 20 pieces per delivery.

## 10 by 10

### 10 by 10

We will manufacture and deliver 10 encoders within 10 working days (365 days a year - with the exception of 24th Dec. until 2nd Jan.)



### 48 h Express-Service

We can process your order within 48 hours; we can ship stock items the same day.



### Technical Support

Kübler' applications team is present on site all over the world for advice, analysis and support.

Kübler Germany / Austria ..... +49 7720 3903 952  
Kübler France ..... +33 3 89 53 45 45  
Kübler Italy ..... +39 026 423 345  
Kübler Poland ..... +48 61 84 99 902



### Sample Service

We manufacture samples of special designs or according to customer specification within shortest time.



### Safety Services

- Adapted service packages
- Individual customer solutions

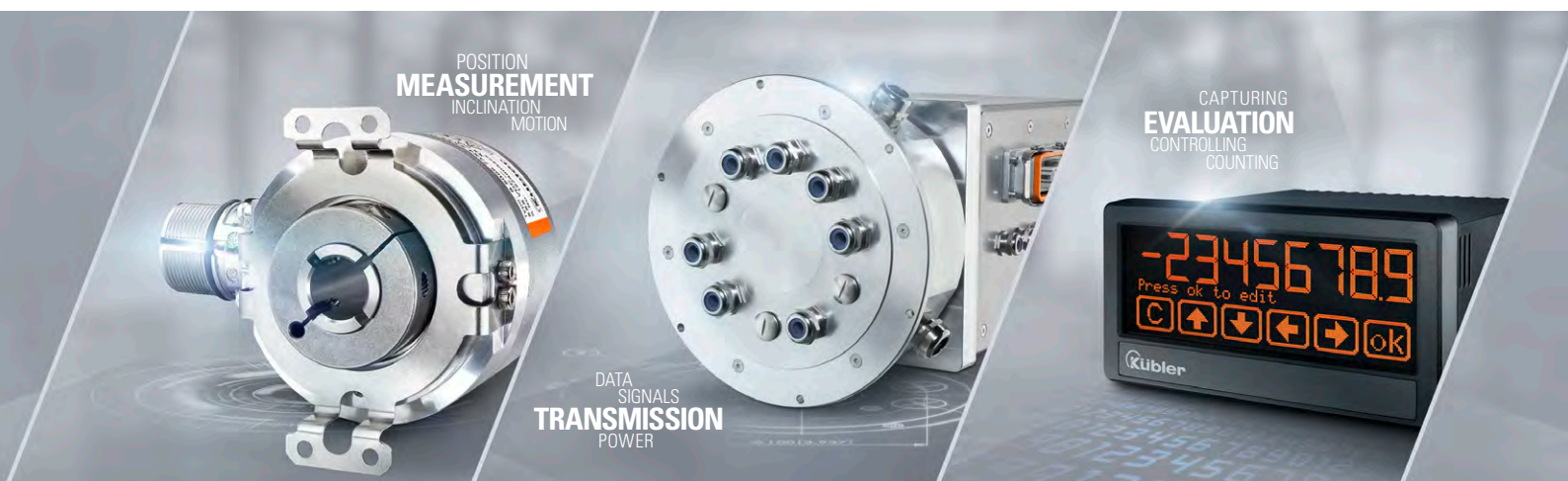


### Tailor-made Solutions – Kübler Design System (KDS) OEM Products and Systems (OPS)

We develop jointly with our customers product and engineering solutions for customer-specific products, integrated drive solutions, up to complete systems.

Kübler Turkey ..... +90 216 999 9791  
Kübler China ..... +86 10 8471 0818  
Kübler India ..... +91 2135 618200  
Kübler USA ..... +1 855 583 2537

# Product portfolio – Made in Germany



## MEASUREMENT

Rotary speed and position detection, linear position, and speed measurement as well as inclination angle detection.

- Encoders
- Bearingless encoders
- Motor Feedback Systems
- Linear measuring technology
- Shaft copying systems
- Inclinometers

## TRANSMISSION

Reliable and interference-free transmission of electrical currents, signals, and data. Communication between control system and sensors.

- Slip rings, standard
- Slip rings, customized solutions
- Signal converter
- Cables and connectors

## EVALUATION

Recording of quantities, counting of units of any kind, and reliable speed and position recording for functional safety.

- Displays and counters
- Process equipment
- Safe speed monitors up to SIL3/PLe

We offer solutions for the following industries:



**The high performance level and reliability** of the Kuebler products are based on our long experience in these demanding application sectors. Learn more about our application-specific solutions under:

[kuebler.com/industries](http://kuebler.com/industries)

# Contents

## MEASUREMENT

Incremental bearingless encoders RIL201, RIL501	4
Robust bearingless encoders HDRI500, HDRI5000	5
Motor Feedback Systems for servo motors – Sendix S36 Motor-Line	6
Sendix F58 PROFINET IO encoder	7
Absolute encoders with SAE J1939	8
Draw-wire encoders with SAE J1939	9
Draw-wire encoder B75, Compact-Line	10
Draw-wire encoder C105, Compact-Line	11
Draw-wire encoder C60, Robust-Line	12
Inclinometers IN88 with SAE J1939	13
Absolute shaft copying system Ants LEB02	14
Safe shaft copying system Ants LES02 with PSU02	15

---

## TRANSMISSION

Pancake slip ring SR160P – Solution for End-of-Arm-Tooling	16
Slip ring SRS250 – Smart solution for Industry 4.0 / IIoT	17
Signal converter portfolio	18

---

## EVALUATION

Speed monitoring Safety-M compact SMC1.3 and SMC2.4	19
Multifunctional display / control devices 570T, 571T, 573T	20
LED process display Codix 534	21

---

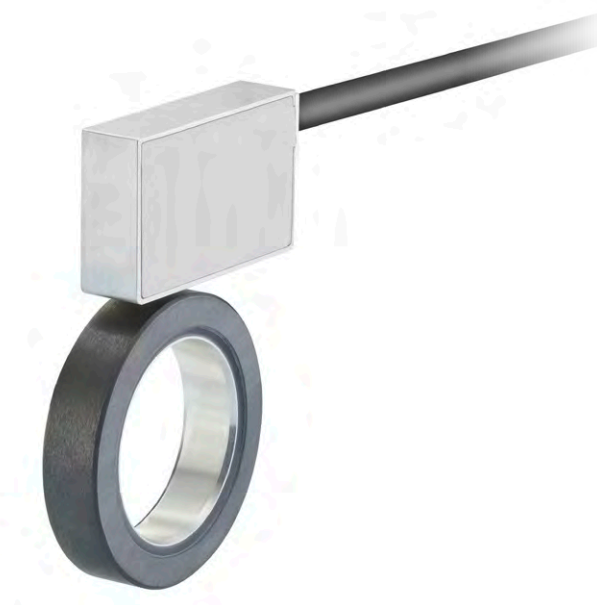
## INNOVATION MARATHON

22

Technical  
information

## For integration in motors

### Incremental bearingless encoders RIL201, RIL501



#### For a compact motor design.

The magnetic bearingless encoders are free of wear and robust at the same time thanks to a contactless measuring principle. This means your motors can enjoy continuous operation without fault. The compact design really comes into its own in tight installation spaces.

SinCos

RS422  
TTLPush-Pull  
HTL

Features	Benefits
100% integration in the motor	• Slim motor design is possible
Compact dimensions – adapted to the corresponding installation space in the motor	• Optimal integration in any motor concept
Kübler shielding technology	• Interference field of the magnetic brake is shielded 100 %
High signal quality	• Optimal drive control
Smart Technology	• Intelligent solutions for different motors

#### Application asynchronous motors

Asynchronous motors are increasingly used in applications where the available space is limited. In response to this requirement, drives are becoming ever more compact.

To reduce the length, Kübler provides magnetic, bearingless encoders, which can also be integrated customer specifically in the motor. A scope of delivery tailored to customer requirements and comprising sensor head, magnetic ring and shielding

(against magnetic effects from the brake) is provided for such purpose.

This modular system consisting of optimally coordinated components allows Kübler to provide solutions for all motor sizes with minimum variance.





Technical  
information

## For mounting on large shafts

### Robust bearingless encoders HDRI500, HDRI5000

#### For large motors and generators.

The bearingless encoders HDRI500 and HDRI5000 are used wherever it is not possible to mount encoders with bearings directly on large generator or motor shafts.

These encoders provide maximum resolution and enable high control quality via digital realtime signal processing.

RS422  TTL

Push-Pull  HTL



Sin Cos

BISS  
INTERFACE

#### Features

Mounting on shafts up to max.  $\varnothing$  740 mm possible

Smart Technology

Realization of additional functions possible

High mounting tolerance

#### Benefits

- Direct speed measuring on large shafts

- Flexible adaptability to customer applications

- Options for condition monitoring and predictive maintenance

- Quick and easy mounting on the motor

#### Applications Large motors, generators





Technical  
information

## Motor Feedback Systems for servo motors

### Sendix S36 Motor-Line



#### Mechanically and electronically robust.

The Sendix S36 Motor-Line is particularly shock and vibration resistant due to its robust construction. The latest mechanical gear technology, robust bearing structure in Safety-Lock™ Design and wide temperature range ensure reliable and problem-free continuous operation of your motors, even in the toughest environments.

RS485

BiSS  
INTERFACE

SinCos

SIL2  
Safety  
PLd

Features	Benefits
Uniform dimensions of 36 mm for all singleturn and multiturn variants	• Option for standardizing the mounting between the encoder and motor as well as reducing motor variants
High signal quality with a resolution $\leq 2048$ ppr SinCos or $\leq 24$ bit fully digital even when exposed to shock and vibrations	• Enhanced performance plus quieter operation and less heat formation by the servo motor
An encoder platform with all common interfaces	• Maximum flexibility when selecting the preferred electrical interfaces
Functional safety: Certified Motor Feedback System from sensors to mechanics to electrical interface	• Reliable speed monitoring and rapid acceptance during certification of the overall system

#### Application servo motors

Synchronous servo motors are ideal for all applications requiring precision and dynamism. That makes them perfect for converter operation. Especially when it comes to dynamic axes, consistent speed controls and positioning accuracy, Motor Feedback Systems are essential components in drive systems. To ensure effective control of the servo motors, the exact rotor position is communicated via singleturn or multiturn information.

Above all, the intrinsic heating of the powerful synchronous motors entails high ambient temperatures. As the sensors are highly integrated in these drives, encoders are more directly exposed to high temperatures than with other motors.







Technical  
information

## For realtime applications Sendix F58 PROFINET IO encoder

### New generation.

The optical absolute multturn Sendix F58 PROFINET IO encoder is ideal for realtime applications. Thanks to the new technical platform, the encoder can also be integrated in PROFIdrive and PROFInergy networks. The vertical communication, from control level to industrial production facilities, enables location-independent parameterization, remote diagnosis as well as priority-assisted process data exchange. Even maintenance work can be done in less time.



PROFI  
NET

Features	Benefits
PROFINET IO, RT, IRT	<ul style="list-style-type: none"> <li>Integration in applications with different performance requirements</li> </ul>
Supports isochronous mode	<ul style="list-style-type: none"> <li>Can be implemented in networks for tough realtime requirements with cycle times &lt; 1 ms</li> </ul>
Latest encoder profile (V 4.2)	<ul style="list-style-type: none"> <li>Complete support for all Profinet features</li> </ul>
Supports isochronous cycle times of a send cycle up to 31.25 $\mu$ s and a jitter < 1 $\mu$ s	<ul style="list-style-type: none"> <li>Ideal for highly synchronous applications such as axis synchronization</li> </ul>
PROFIdrive profile	<ul style="list-style-type: none"> <li>Interoperability between diverse control and drive manufacturers thanks to PROFIdrive</li> </ul>
PROFInergy profile	<ul style="list-style-type: none"> <li>Optimized / Reduced energy utilization thanks to PROFInergy features</li> </ul>

**Applications** Factory automation, automotive manufacturing, logistics, robotics





Technical  
information

# Easy integration in vehicles

## Absolute encoders with SAE J1939

### Robust magnetic encoders.

The Sendix M36 and M58 encoders feature a high protection level and a wide operating temperature range. They are specifically designed for applications in mobile automation. The SAE J1939 interface, which can be customized, allows very easy integration in the on-board network of your vehicles. On request also available with e1 approval.



SAE J1939

Features	Benefits
Robust bearing structure in Safety-Lock™ Design, magnetic sensors, optional stainless steel housing	• Long service life, even in case of strong shocks and vibrations
Protection level IP67 and temperature range from -40°C ... +85°C	• High reliability, even in case of harsh conditions, in particular in outdoor applications
Energy Harvesting Technology	• The advantages of an electronic multiturn encoder without the disadvantages of a battery
Indication of the operating state by two-color LED	• Easy commissioning
Adaptable PGNs, predefinable PGs for position, speed and alarm	• Easy integration in your vehicle network

**Applications** Diesel drives, vehicle networks for trucks and buses, agricultural and forestry machinery, trailer connections, military vehicles, fleet management systems, motor homes, marine navigation systems





Technical  
information

## Easy integration in vehicles

### Draw-wire encoders with SAE J1939

#### Robust draw-wire encoders.

All our draw-wire mechanisms of the Compact-Line and Performance-Line ranges can be equipped with encoders and SAE J1939 interface. The SAE J1939 interface, which can be customized, allows very easy integration in the on-board network of your vehicles. On request also available with e1 approval.



**SAE J1939**

#### Features

Diverse draw-wire portfolio with measurement ranges of 0.3 m to 42.5 m

Compact design with variable mounting possibilities, different wire types and fastening methods

Adaptable PGNs, predefinable PGs for position, speed and alarm

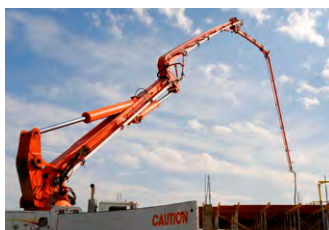
Robust draw-wire mechanics, low-wear wire outlet and sturdy zinc die-cast housing

#### Benefits

- The right performance for your application
- Easy and individual assembly, suitable for tight installation spaces
- Easy integration in your vehicle network
- Ideal for dynamic applications with high travel speeds in harsh environments

#### Applications

Diesel drives, vehicle networks for trucks and buses, agricultural and forestry machinery, trailer connections, military vehicles, fleet management systems, motor homes, marine navigation systems



Technical  
information

## Now also with redundant analog sensor

### Draw-wire encoder B75, Compact-Line

#### Measuring length up to 3 m.

The draw-wire encoder B75 is ideal for outdoor use thanks to its robust design. The draw-wire mechanics can be combined with various sensors. That allows analog, incremental and fieldbus interfaces to be selected freely. New safety concepts can be realized with redundant sensors. Integration in the tightest installation spaces is possible thanks to the extremely flat design. Individual alignment of the connection technology, as cable or plug variant, helps ensure maximum compactness of this draw-wire encoder.



CANopen SAE J1939

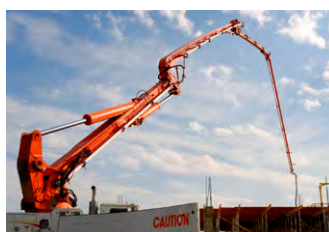
Analog  
outputAnalog  
2-output

SSI

PROFI  
BUSPROFI  
NET

Features	Benefits
Redundant analog sensor (4 ... 20 mA or potentiometer)	• Realization of new safety concepts
Can be combined with Sendix encoders	• Matching interface for each application
Flexible assembly in 90° steps	• Optimal integration: Extraction direction individually adaptable to the relevant application requirement
Closable ventilation and water drainage holes	• Reliable in outdoor use: not affected by icing. Liquids can escape.
Robust design	• Suitable for use in mobile automation

**Applications** Mobile work machinery, work and rescue platforms, automatic guided vehicles, general automation





Technical  
information

## Even more compact – now also with redundant analog sensor

### Draw-wire encoder C105, Compact-Line

#### Measuring length up to 6 m.

The draw-wire encoder C105 is ideal for outdoor use thanks to its robust design. Further development of the draw-wire mechanics makes the measuring system even more compact and reliable.

Thanks to the newly designed flexible wire opening, the sensor is able to compensate assembly tolerances. This results in increased availability even in awkward installation situations.

The draw-wire mechanics can be combined with various sensors. That allows analog, incremental and fieldbus interfaces to be selected freely.



CANopen SAE J1939

Analog  
outputAnalog  
2x output

SSI

PROFI  
BUSPROFI  
NET

#### Features

Redundant analog sensor (4 ... 20 mA or potentiometer)

Can be combined with Sendix encoders

Flexible wire opening

Individual alignment of the connection technology

Robust design

#### Benefits

- Realization of new safety concepts

- Matching interface for each application

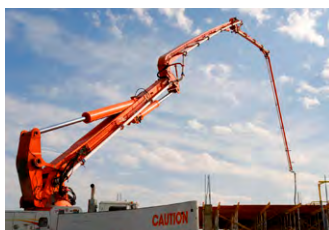
- For durable performance thanks to compensation of assembly tolerances

- Maximum flexibility during integration

- Suitable for use in mobile automation

#### Applications

Telescopic mast, mobile work machinery, work and rescue platforms, general automation

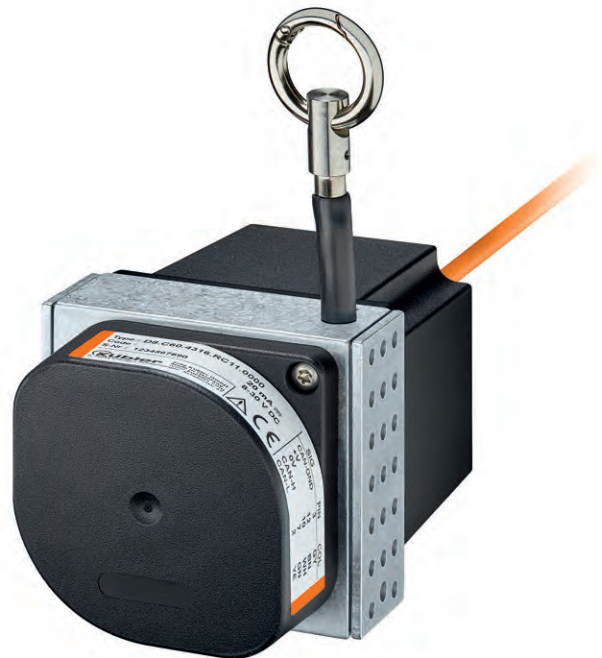




Technical  
information

## Compact outdoor draw-wire system

### Draw-wire encoder C60, Robust-Line



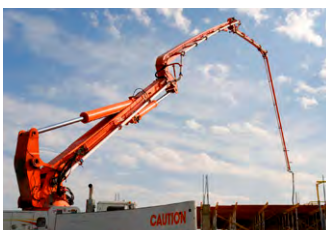
#### Robust with redundancy.

Its extremely robust design, its high protection level IP69k and its wide temperature range reaching  $-40^{\circ}\text{C}$  ...  $+85^{\circ}\text{C}$  make the new draw-wire encoder C60 a particularly reliable and long-lasting equipment. Its flexibility and adaptability reflects in the broad selection of housing and wire types, its wide measuring range and its various interfaces. The C60 draw-wire encoder is also available in redundant version.

**CANopen**  
Analog  
output

Features	Benefits
Various constructions, open, closed housing or housing with perforated sheet metal cover	• The suitable robustness for every application, ensures high plant availability
Protection level up to IP69k, wide temperature range $-40^{\circ}\text{C}$ ... $+85^{\circ}\text{C}$	• Reliable and long-term outdoor use
Stainless steel wire ( $\varnothing$ 1.0 mm) and various wire fastenings (clip, M4 thread and ring)	• Flexible and optimum connection to your application
Excellent linearity up to $\pm 0.1\%$	• You achieve high performance and in addition save costs
Potentiometer, 0 ... 5 V, 0 ... 10 V, 4 ... 20 mA and CANopen interfaces	• Usual interfaces, suitable for your application
Redundant version possible	• High plant availability

**Applications** Mobile work machinery, work and rescue platforms, general automation



Technical  
information

## Easy integration in vehicles

### Inclinometers IN88 with SAE J1939

#### Robust and versatile.

The sturdy housing, their high protection level and their wide temperature range ensure reliable operation and long service life. The special feature of the IN88 is its high accuracy, which remains constant even in harsh environments and in case of temperature fluctuations. The SAE J1939 interface, which can be customized, allows very easy integration in the on-board network of your vehicles.



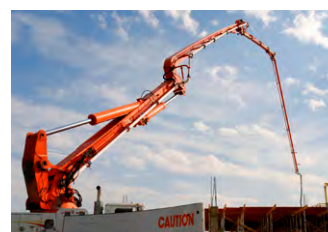
SAE J1939



Features	Benefits
Robust: aluminum housing, protection level IP67 / IP69k, temperature range -40°C ... +85°C	• Optimally prepared for outdoor operation, long service life, high availability
Constant high accuracy - resolution 0.01°, parameterizable filter settings	• The optimum measurement whatever the environment
Measurement of inclination angles in the measuring range from 0° ... 360° (1-dimensional) or ±85° (2-dimensional)	• No restrictions, your application determines the measuring range
Slim design, stacked installation possible for redundancy	• Easy and flexible space-saving installation
Adaptable PGNs, predefinable PGs for position, speed and alarm	• Easy integration in your vehicle network

#### Applications

Diesel drives, vehicle networks for trucks and buses, agricultural and forestry machinery, trailer connections, military vehicles, fleet management systems, motor homes, marine navigation systems







Technical  
information

## Absolute shaft copying system

Ants LEB02, measuring length up to 392 m



### Absolute positioning.

Ants LEB02 an extremely robust, compact and non-contact measuring system. Elevator car absolute position values are measured slip-free with a resolution of 1 mm and a traverse speed of 8 m/s. Additional components such as magnetic switches are no longer needed. Especially the easy mounting reduces installation time, thus contributing to overall costs reduction.

Features	Benefits
Absolute positioning	<ul style="list-style-type: none"> <li>• Elimination of additional sensors in the elevator shaft – reduction of installation time and of overall costs</li> <li>• Highest elevator availability - no referencing required in case of power failure</li> </ul>
Slip-free measuring system	<ul style="list-style-type: none"> <li>• Direct measurement on the elevator car - always the right positioning</li> </ul>
Measuring length up to 392 m	<ul style="list-style-type: none"> <li>• Suitable for 99.9 % of all buildings worldwide</li> </ul>
Robust stainless steel tape	<ul style="list-style-type: none"> <li>• Reliable and long service life</li> </ul>
Mounting kit	<ul style="list-style-type: none"> <li>• Easy mounting, reduction of installation time</li> </ul>

**Applications** Elevator technology, positioning of the elevator car







Technical  
information

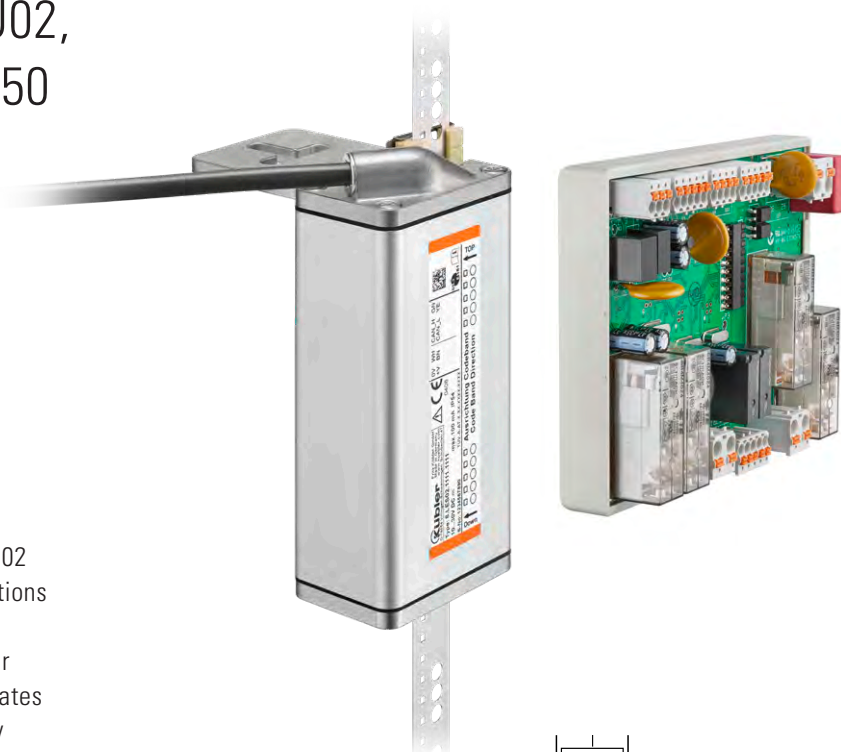
## Safe shaft copying system

Ants LES02 with PSU02,  
acc. to EN 81-20/21/50

### Absolute positioning.

The PSU02 is combined with the Ants LES02 sensor to realize elevator and safety functions in compliance with EN 81-20/-21/-50.

The Ants LES02 measures the absolute car position 100% slip-free. The PSU02 evaluates the safe position feedback and triggers by means of safety relays, jointly with the elevator control, the required safety functions.



CE US

SSI

CANopen  
LIFT

SIL3  
EN 81

EN 81-20/21/50

### Features

Absolute positioning

SIL3/PLe certified by TÜV

Slip-free measuring system

Measuring length up to 392 m

Mounting kit

### Benefits

- Elimination of additional sensors in the elevator shaft – reduction of installation time and of overall costs
- Highest elevator availability - no referencing required in case of power failure
- Fulfills safety functions according to EN 81-20/21/50 in conjunction with a safe elevator control / evaluation unit
- Simplifies the overall certification of the elevator
- Direct measurement on the elevator car - always the right positioning
- Suitable for 99.9 % of all buildings worldwide
- Easy mounting, reduction of installation time

**Applications** Elevator technology, positioning of the elevator car





Technical  
information

## Solution for End-of-Arm-Tooling

### Pancake slip ring SR160P

#### Slip ring for robotics.

The pancake slip rings are the ideal solution for End-of-Arm-Tooling in robotics. They guarantee the reliable transmission of signals, data and load in a very short installation space and at low weight. The system consists of two superimposed boards with slip ring tracks and transfer brushes.

The flexible design allows optimal integration into your End-of-Arm-Tooling.

For example, for additional positioning on high-precision robots, the slip ring can also be combined with a secondary encoder.



Features	Benefits
Flexible design with installation depth from 10 mm at $\varnothing$ 160 mm	• Optimal integration into your End-of-Arm-Tooling
High contact reliability	• Reliable and maintenance-free operation
Up to 20 channels for fieldbus / Industrial Ethernet, signal and load transmission (up to 5 A / 60 VAC, 48 VDC)	• Flexible application for a wide range of requirements
Optionally with integrated Kübler absolute encoder	• For example, for additional positioning on high-precision robots (secondary encoder)

#### Applications Robotics, End-of-Arm-Tooling





Technical  
information

## Smart solution for Industry 4.0 / IIoT

### Slip ring SRS250

#### With integrated sensors.

Power, signals and Industrial Ethernet communication are transmitted reliably via the slip ring. The integrated sensors support the implementation of Industry 4.0 / IIoT concepts via functions like condition monitoring or electronic data sheet. Its robust modular design and various connection options ensure flexible and reliable applications. Thanks to its innovative contact technology, this slip ring is particularly low-maintenance and durable.



#### Features

Transmission of Industrial Ethernet and analog signals (0 ... 20 mA, 0 ... 10 V, Pt100 / 1000 and thermocouples)

Transmission of current up to 600 V / 100 A

Integrated system of sensors

Electronic data sheet

High protection level IP64 (optional IP67)

Designed for maximum adaptability

#### Benefits

- Reliable networking and fault-free system control
- Optimal supply for powerful drives
- High system availability thanks to condition monitoring, Lifetime histograms and predictive maintenance
- Simplifies commissioning and asset management
- Reliable and durable performance
- High level of integration in the system saves space and costs

**Applications** Filling systems, labelling machines, sealing machines, automatic rotary machines, construction machinery, cranes



Technical  
information

## Signal converter portfolio

Frequency divider, level converter,  
signal converters and signal splitters

### Efficient.

The signal converter portfolio includes various devices that allow adapting signals to the most various applications.

Frequency divider:  $f$  (kHz)  $\rightarrow$   $f$  (Hz)

Level converter: HTL  $\rightarrow$  TTL; TTL  $\rightarrow$  HTL

Signal converters: SinCos  $\rightarrow$  HTL / TTL; SSI  $\rightarrow$  HTL / TTL;  
 $f$  (kHz)  $\rightarrow$  Analog; SSI  $\rightarrow$  Analog

Signal splitters: SinCos  $\rightarrow$  2x SinCos, 2x TTL / HTL;  
2x TTL / HTL  $\rightarrow$  2x TTL / HTL



Push-Pull  
HTL

RS422  
TTL

SinCos

Analog  
output

SSI

### Features

Efficient: they convert frequencies or signals with clock frequencies of up to 1 MHz

DIN rail mounting with plug-in screw terminals and standard connectors. Compact design.

Programming via interface, USB or DIL switches

Level converter with galvanic isolation

### Benefits

- Adaptation to the application control, which is not able to process the provided sensor signal directly

- Easy modular mounting. Easy module replacement if other levels are required.

- Highest adaptability for every application

- No transmission of interference pulses

### Applications

Retrofit, printing presses, automation technology, weaving machines, multi-axis machines







Technical  
information

## Extended possibilities

### Speed monitoring Safety-M compact SMC1.3 and SMC2.4



#### Speed monitor.

The proven Safety-M compact devices are becoming even more versatile: more inputs and outputs, more interfaces. The removable operating and diagnostic display (OLED) stands for easy parameterizing. The safe inputs and outputs and the integrated signal splitter allow integration in existing safety circuits and upgrading old machines.

Push-Pull HTL RS422 TTL SIL2 PLd SIL3 PLe

#### Features

Connection of incremental encoders (HTL differential, HTL proximity switch, RS422)

Integrated signal splitter

Local diagnosis

1 analog output 4 ... 20 mA

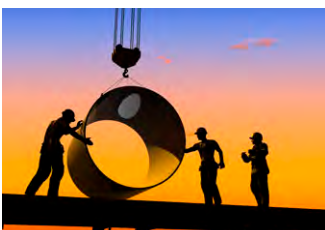
Up to 2 incremental encoder interfaces,  
8/4 control inputs, 4/2 relay outputs,  
8/4 electronic switching outputs 500 mA

#### Benefits

- This results in a versatility in drive safety functions
- No complex, external cable routing – easy routing to the controller/frequency inverter
- With status LED on the front panel and removable OLED touchscreen with plain language display
- Fast internal signal conversion of the speed into analog values
- Higher flexibility, allows monitoring more complex applications

#### Applications

Machine and system engineering, cranes, steelworks, wind turbines, stage technology, storage and conveyor technology



Technical  
information

## Simple and versatile

### Multifunctional display / control devices

570T, 571T, 573T



#### Touchscreen.

A benefit of these new multifunctional devices is their user friendliness using simple plain language programming with resistive touchscreen. All metering, measuring and control tasks, such as pulse sensing for quantity, position, frequency, and time (571T).

SSI signals for position measurement/control (570T) as well as processing of standard signal inputs and transmitters (573T).

RS232  
RS485



Push-Pull  
HTL

RS422  
TTL

Analog  
output



Features	Benefits
Plain language programming, touchscreen (color switching), no instruction manual required	• Easy and quick start-up – saves costs and time
4 fast transistor and/or 2 relay switch outputs	• Flexible programming of switching states with display colour switching, to your application
High analog output resolution of up to 16 bit	• Preparation of measured values as standard signal inputs for further processing
Available RS232 or RS485 interface, with MODBUS, ISO 1745 or printer protocol	• Support for the commissioning or control of your application with many display formats such as double or large display
Modular design and order number (switch outputs, analog output, and/or interface)	• The device only includes the necessary functions

#### Applications

Gas turbines, crane systems, crane systems, turbines, wind turbines, tank systems, processing machines, ice surface processing machines, production systems, ovens



Technical  
information

## Compact display for analog standard signals

### LED process display Codix 534 with many functions

#### LED process display.

Front panel mounting with scalable, bright 5-digit LED display. The 14-bit resolution ensures an accurate measured value display range, with minimum and maximum value detection and scalable time-controlled totalizing of the measured value.



#### Features

1 current measurement input, 1 voltage measurement input, fast measuring time of max. 0.1 second

Galvanic separation with reverse polarity protection, 14-bit resolution

Freely definable characteristic curve end points to adapt the desired display value; display with leading zero blanking and programmable decimal point

Totalizer with programmable factor, divisor and decimal point; Automatic min./max. detection

#### Benefits

- Versatile use with most diverse sensors

- Highly accurate and reliable display of the measured values

- Easy handling and reading of the display

- Direct display of the required values on site, without preparation by a control

#### Applications

Process industry, woodworking, special machines construction, packaging, food industry, climate, cooling, heating, panel builder, power plants, chemical industry





# INNOVATION MARATHON

Kübler is your partner today and in the future when it comes to creating real benefits for your application. We are focusing on further high-growth market segments with our growth strategy and the associated "Innovation Marathon".



Gebhard F. and Lothar W. Kübler  
Managing Directors / Owners of  
the Kübler Group

Together with our customers, we develop future-proof and groundbreaking product innovations in technology workshops or from current projects, which open up new possibilities in various applications. In doing so, we always pursue one goal: "To impress you with added value".

We have created the basis for this in recent years. The number of employees in research and development has increased significantly. In addition to the headquarters of the Kübler Group in Villingen-Schwenningen, two competence centers were founded, such as the Engineering Solution Center Berlin, from

which innovations for digital real-time signal processing, smart technology, and magnetic bearingless sensor systems are created, and the Competence Center Munich, which develops customized slip ring solutions.

Our "Innovation Marathon" is rounded off with a close partnership with research institutes and universities.

With the "Innovation Marathon", products and solutions are created today and in the future that will take you a significant step further. When do we talk about your application?

## Kübler is TOP 100 Innovator 2018



Awards ceremony  
Left to right: Dr. Philipp Becker, Ranga  
Yogeshwar and Lothar Kübler







# INNOVATION MARATHON

IIoT

Industrial Ethernet

Industry 4.0 Motor Feedback Systems

Smart Bearingless Encoders

Condition Monitoring

Single Cable Solutions

Analytics

Smart Motor

Functional Safety

Slip Rings

# Kübler worldwide

490 employees worldwide · 4 production sites · presence in over 50 countries

## Europe

Austria  
Belarus  
Belgium  
Bulgaria  
Croatia  
Czech Republic  
Denmark  
Estonia  
Finland  
France  
Germany  
Great Britain  
Greece  
Hungary  
Iceland  
Ireland

Lithuania  
Italy  
Netherlands  
Norway  
Poland  
Portugal  
Russia  
Slovakia  
Slovenia  
Spain  
Sweden  
Switzerland  
Turkey  
Ukraine

## Africa

Egypt  
Morocco  
South Africa  
Tunisia

## North and South America

Argentina  
Brazil  
Canada  
Mexico  
Peru  
U.S.A.

## Oceania

Australia  
New Zealand

## Asia

China  
Hong Kong, China  
India  
Indonesia  
Israel  
Lebanon  
Malaysia  
Philippines  
Singapore  
South Korea  
Taiwan, China  
Thailand  
United Arab Emirates  
Vietnam

## Kübler Group



Fritz Kübler GmbH  
Germany



Kubler SP. Z O.O.  
Poland



Kuebler (Beijing) Automation Trading Co. Ltd.  
China



Fritz Kübler SARL  
France



Kübler Turkey Otomasyon Ticaret Ltd. Sti.  
Turkey



Kuebler Korea (by F&B)  
South Korea



Kübler Italia S.r.l.  
Italy



Kuebler Inc.  
USA



Kübler Österreich  
Austria



Kuebler Automation India Pvt. Ltd.  
India

## Kübler Group

### Fritz Kübler GmbH

Schubertstrasse 47  
78054 Villingen-Schwenningen  
Germany  
Phone +49 7720 3903-0  
Fax +49 7720 21564  
info@kuebler.com  
kuebler.com

kuebler.com/new-products