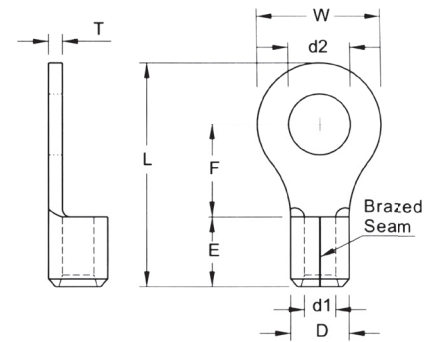




NON-INSULATED RING TERMINALS



MAXIMUM ELECTRIC CURRENT

A.W.G.	22	20	18	16	14
AMP	9	12	17	18	30

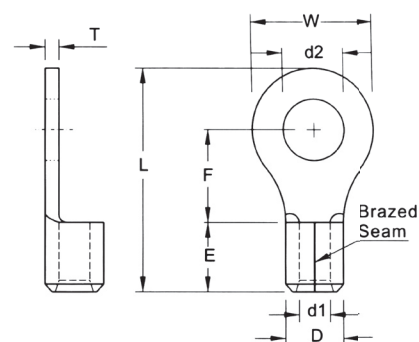
TERMINAL MATERIAL COPPER

WIRE RANGE A.W.G. mm ²	ITEM NO.		STUD SIZE		DIMENSION <small>inch mm</small>							CRIMPING TOOL	Q'TY BOX
	BRAZED SEAM	BRAZED SEAM	d2		W	F	L	E	D	d1	T		
22-16 A.W.G. 0.5-1.5 mm ²	RNB1-2.5	SL1-2.5	#2	.095 2.4		.189 4.8	.488 12.4					IZUMI MODEL 5N18 WITH DIE INDEX NO:1.25 OR K.S. MODEL KST2000D-1322 LY-2045A LY-2045C LY-2045D WITH DIE INDEX NO:1.25	1000
	RNB1-3.2 *	SL1-3.2 *	#4	.126 3.2	.217 5.5	.197 5.0	.492 12.5						1000
	RNBS1-3.7 *	SL1-3.7S *	#6	.146 3.7	.217 5.5	.197 5.0	.492 12.5						1000
	RNBM1-3.7 *	SL1-3.7M *	#6	.146 3.7	.260 6.6	.248 6.3	.567 14.4						1000
	RNBL1-3.7 *	SL1-3.7L *	#6	.146 3.7	.315 8.0	.276 7.0	.622 15.8						1000
	RNBS1-4 *	SL1-4S *	#8	.169 4.3	.260 6.6	.248 6.3	.567 14.4						1000
	RNBL1-4 *	SL1-4L *	#8	.169 4.3	.315 8.0	.276 7.0	.622 15.8						1000
	RNB1-5 *	SL1-5 *	#10	.209 5.3	.315 8.0	.276 7.0	.622 15.8						1000
	RNBL1-5	SL1-5L	#10	.209 5.3				.189 4.8	.134 3.4	.067 1.7	.030 0.75		1000
	RNB1-6 *	SL1-6 *	1/4	.252 6.4	.457 11.6	.433 11.0	.858 21.8						1000
	RNB1-8 *	SL1-8 *	5/16	.331 8.4									1000
	RNB1-10 *	SL1-10 *	3/8	.413 10.5	.535 13.6	.547 13.9	1.004 25.5						1000
	RNB1-12	SL1-12	1/2	.512 13.0		.630 16.0	1.197 30.4						1000
	RNB1-13	SL1-13	9/16	.551 14.0	.756 19.2	.543 13.8	1.197 30.4						1000
	RNB1-14	SL1-14	9/16	.591 15.0									1000
	RNB1-16	SL1-16	5/8	.669 17.0	1.063 27.0	.827 21.0	1.547 39.3				.031 0.8		1000
	RNB1-20	SL1-20	3/4	.827 21.0									1000
16-14 A.W.G 1.5-2.5 mm ²	RNBS2-3 2	SL2-3.2S	#2	.087 2.2	.217 5.5	.220 5.6	.520 13.2					IZUMI MODEL 5N18 WITH DIE INDEX NO.2 OR K.S. MODEL KST2000D-1322 LY 2045A WITH DIE INDEX NO.2	1000
	RNB2-3 2 *	SL2-3.2 *	#4	.126 3.2	.260 6.6	.189 4.8	.504 12.8						1000
	RNBL2-3 2	SL2-3.2L	#4	.126 3.2	.335 8.5	.307 7.8	.661 16.8	.189 4.8	.161 4.1	.091 2.3	.031 0.8		1000
	RNBS2-3 7 *	SL2-3.7S *	#6	.146 3.7		.189 4.8	.504 12.8						1000
	RNBM2-3 7 *	SL2-3.7M *	#6	.146 3.7	.260 6.6	.248 6.3	.567 14.4						1000
	RNBL2-3 7 *	SL2-3.7L *	#6	.146 3.7	.335 8.5	.291 7.4	.650 16.5						1000

UL cUL ALL LISTED
* ADDITIONAL SF CERTIFIED



NON-INSULATED RING TERMINALS



MAXIMUM ELECTRIC CURRENT

A.W.G.	16	14	12	10
AMP	18	30	35	50

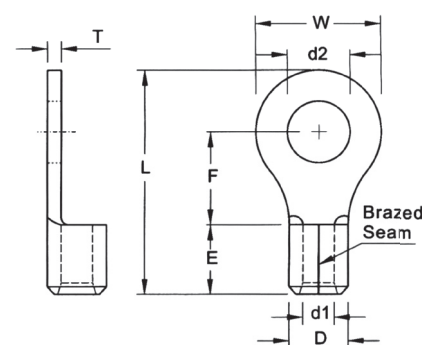
TERMINAL MATERIAL COPPER

WIRE RANGE A.W.G. mm ²	ITEM NO.		STUD SIZE		DIMENSION <small>inch mm</small>							CRIMPING TOOL	Q'TY BOX
	BRAZED SEAM	BRAZED SEAM	d2		W	F	L	E	D	d1	T		
16-14 A.W.G 15-25 mm ²	RNBS2-4 *	SL2-4S *	#8	.169 4.3	.260 6.6	.248 6.3	.567 14.4	189 4.8	161 4.1	.091 2.3	.031 0.8	IZUMI MODEL 5N18 WITH DIE INDEX NO.2 OR K.S MODEL KST2000D-1322 LY-2045A LY-2045C LY-2045D WITH DIE INDEX NO:2	1000
	RNBL2-4 *	SL2-4L *	#8	.169 4.3	.335 8.5	.291 7.4	.650 16.5						1000
	RNBS2-5 *	SL2-5S *	#10	.209 5.3									1000
	RNBL2-5 *	SL2-5L *	#10	.209 5.3	.374 9.5	.669 17.0	1000						
	RNB2-6 *	SL2-6 *	1/4	.252 6.4	.472 12.0	.433 11.0	.858 21.8						1000
	RNB2-8 *	SL2-8 *	5/16	.331 8.4									1000
	RNB2-9	SL2-9	5/16	.386 9.8	.535 13.6	.547 13.9	1.004 25.5						1000
	RNB2-10 *	SL2-10 *	3/8	.413 10.5									1000
	RNB2-12	SL2-12	1/2	.512 13.0	.756 19.2	.630 16.0	1.197 30.4						1000
	RNB2-14	SL2-14	9/16	.591 15.0	1.063 27.0	.827 21.0	1.547 39.3						1000
	RNB2-16	SL2-16	5/8	.669 17.0									1000
	RNB2-20	SL2-20	3/4	.827 21.0									1000
14-12 A.W.G. 2.5-4 mm ²	RNB3-4	SL3-4	#8	.169 4.3	.315 8.0	.315 8.0	.709 18.0	.236 6.0	.201 5.1	.114 2.9	.039 1.0	IZUMI MODEL 5N18 WITH DIE INDEX NO:5.5 OR K.S. MODEL KST2000D-1322 LY-2045A LY-2045C LY-2045D WITH DIE INDEX NO:5.5	1000
	RNBS3-5	SL3-5S	#10	.209 5.3									1000
	RNBM3-5	SL3-5M	#10	.209 5.3	.374 9.5	.362 9.2	.787 20.0						1000
	RNBL3-5	SL3-5L	#10	.209 5.3	.472 12.0	.370 9.4	.843 21.4						1000
	RNB3-6	SL3-6	1/4	.252 6.4									1000
	RNB3-8	SL3-8	5/16	.331 8.4	.591 15.0	.524 13.3	1.063 27.0						1000
	RNB3-10	SL3-10	3/8	.413 10.5									1000
	RNB3-12	SL3-12	1/2	.512 13.0	.756 19.2	.630 16.0	1.244 31.6						1000
12-10 A.W.G 4-6 mm ²	RNB5-3 2	SL5-3.2	#4	.126 3.2	.283 7.2	.228 5.8	.610 15.5	236 6.0	220 5.6	134 3.4	.039 1.0		1000
	RNB5-3 7 *	SL5-3.7 *	#6	.146 3.7		.240 6.1	.618 15.7						1000
	RNBS5-4 *	SL5-4S *	#8	.169 4.3	1000								

UL cUL ALL LISTED
* ADDITIONAL SP CERTIFIED



NON-INSULATED RING TERMINALS



MAXIMUM ELECTRIC CURRENT

A.W.G.	12	10	8
AMP	35	50	70

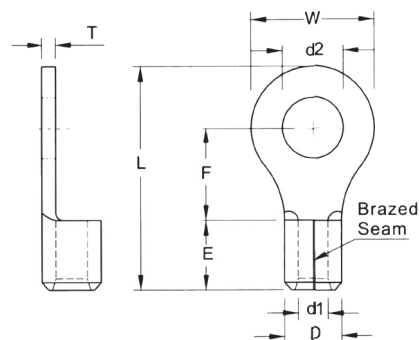
TERMINAL MATERIAL. COPPER

WIRE RANGE A.W.G. mm ²	ITEM NO.		STUD SIZE		DIMENSION <small>inch mm</small>							CRIMPING TOOL	Q'TY BOX
	BRAZED SEAM	BRAZED SEAM	d2		W	F	L	E	D	d1	T		
12-10 A.W.G 4-6 mm ²	RNBL5-4 *	SL5-4L *	#8	.169 4.3	374 9.5	327 8.3	748 19.0					IZUMI MODEL 5N18 WITH DIE INDEX NO 5 5 OR K.S. MODEL KST2000D-1322 LY 2045A LY 2045C LY 2045D WITH DIE INDEX NO 5 5	1000
	RNB5-5 *	SL5-5 *	#10	.209 5.3									1000
	RNB5-6 *	SL5-6 *	1/4	.252 6.4	472 12.0	413 10.5	886 22.5						1000
	RNBM5-6	SL5-6M	1/4	.252 6.4		512 13.0	984 25.0						1000
	RNB5-8 *	SL5-8 *	5/16	.331 8.4	591 15.0	524 13.3	1 063 27.0						1000
	RNB5-10 *	SL5-10 *	3/8	.413 10.5				236 6.0	220 5.6	134 3.4	039 1.0		1000
	RNB5-12 *	SL5-12 *	1/2	.512 13.0	756 19.2	063 16.0	1 244 31.6						500
	RNB5-14	SL5-14	9/16	.591 15.0									500
	RNB5-16	SL5-16	5/8	.669 17.0	1 260 32.0	992 25.2	1 858 47.2						500
	RNB5-18	SL5-18	11/16	.748 19.0									500
8 A.W.G. 8 mm ²	RNB8-3.7	SL8-3.7	#6	.146 3.7	.315 8.0		.846 21.5					IZUMI MODEL 5N18 WITH DIE INDEX NO:8 OR K.S. MODEL KST2000D-1322 LY-2045A LY-2045B LY-2045C LY-2045D WITH DIE INDEX NO:8	500
	RNBS8-4	SL8-4S	#8	.169 4.3	.315 8.0	.366 9.3	.846 21.5						500
	RNBL8-4	SL8-4L	#8	.169 4.3	.472 12.0		.937 23.8						500
	RNBS8-5	SL8-5S	#10	.209 5.3	.346 8.8	.429 10.5	.937 23.8						500
	RNBM8-5 *	SL8-5M *	#10	.209 5.3	.472 12.0	.366 9.3							500
	RNBL8-5	SL8-5L	#10	.209 5.3	.591 15.0	.543 13.8	1.173 29.8	.335 8.5	.283 7.2	.177 4.5	.047 1.2		500
	RNBS8-6 *	SL8-6S *	1/4	.252 6.4	.472 12.0	.366 9.3	.917 23.3						500
	RNBL8-6	SL8-6L	1/4	.252 6.4	.591 15.0	.535 13.6	1.150 29.2						500
	RNB8-8 *	SL8-8 *	5/16	.331 8.4	.591 15.0	.535 13.6	1.150 29.2						500
	RNB8-10 *	SL8-10 *	3/8	.413 10.5									500
	RNB8-12	SL8-12	1/2	.512 13.0	.787 20.0	.591 15.0	1.319 33.5						500

UL cUL ALL LISTED
* ADDITIONAL CERTIFIED



NON-INSULATED RING TERMINALS



MAXIMUM ELECTRIC CURRENT:

A.W.G.	8	6	4
AMP.	70	95	125

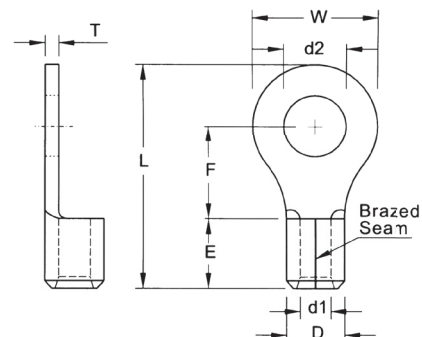
TERMINAL MATERIAL: COPPER

WIRE RANGE A.W.G. mm ²	ITEM NO.		STUD SIZE		DIMENSION ^{inch} mm						CRIMPING TOOL	Q'TY BOX	
	BRAZED SEAM	BRAZED SEAM	d2		W	F	L	E	D	d1			T
8 A.W.G. 8 mm ²	RNB8-14	SL8-14	9/16	.591 15.0	1.244 31.6	1.008 25.6	1.949 49.5	.335 8.5	.283 7.2	.177 4.5	.047 1.2	IZUMI MODEL 5N18 WITH DIE INDEX NO:8 OR K.S. MODEL KST2000D-1322 LY-2045A LY-2045B LY-2045C LY-2045D WITH DIE INDEX NO:8	500
	RNB8-16	SL8-16	5/8	.669 17.0									500
	RNB8-18	SL8-18	11/16	.748 19.0									500
	RNB8-20	SL8-20	3/4	.827 21.0									500
6 A.W.G. 14 mm ²	RNB14-4	SL14-4	#8	.169 4.3	.472 12.0	.524 13.3	1.150 29.2	.413 10.5	.354 9.0	.228 5.8	.059 1.5	IZUMI MODEL 9H-60 (EP-38) WITH DIE INDEX NO:14 OR K.S. MODEL LY-2045B LY-2045D WITH DIE INDEX NO:14	500
	RNB14-5 *	SL14-5 *	#10	.209 5.3									500
	RNBS14-6 *	SL14-6S *	1/4	.252 6.4									500
	RNBL14-6	SL14-6L	1/4	.252 6.4	.630 16.0	.559 14.2	1.280 32.5						500
	RNB14-8 *	SL14-8 *	5/16	.331 8.4									500
	RNB14-10 *	SL14-10 *	3/8	.413 10.5									500
	RNB14-11	SL14-11	7/16	.453 11.5	.866 22.0	.780 19.8	1.614 41.0						250
	RNB14-12	SL14-12	1/2	.512 13.0									250
	RNB14-14	SL14-14	9/16	.591 15.0									250
	RNB14-16	SL14-16	5/8	.669 17.0	1.244 31.6	.996 25.3	2.008 51.0						250
	RNB14-18	SL14-18	11/16	.748 19.0									250
	RNB14-20	SL14-20	3/4	.827 21.0									250
4 A.W.G. 22 mm ²	RNB22-4	SL22-4	#8	.169 4.3	.480 12.2	.594 15.1	1.307 33.2	.472 12.0	.453 11.5	.303 7.7	.067 1.7	IZUMI MODEL 9H-60 (EP-38) WITH DIE INDEX NO:22 OR K.S. MODEL KH-120 LY-2045E WITH DIE INDEX NO:22 OR 25	250
	RNBS22-5	SL22-5S	#10	.209 5.3									250
	RNBL22-5	SL22-5L	#10	.209 5.3									250
	RNBS22-6	SL22-6S	1/4	.252 6.4	.480 12.2	.594 15.1	1.299 33.0						250
	RNBL22-6 *	SL22-6L *	1/4	.252 6.4									250
	RNB22-8 *	SL22-8 *	5/16	.331 8.4									250

UL cUL ALL LISTED
* : ADDITIONAL  CERTIFIED



NON-INSULATED RING TERMINALS



MAXIMUM ELECTRIC CURRENT

A.W.G.	4	2
AMP	125	170

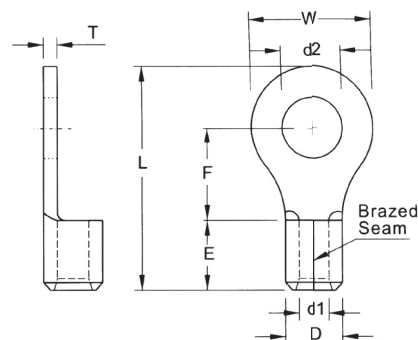
TERMINAL MATERIAL COPPER

WIRE RANGE A.W.G. mm ²	ITEM NO.		STUD SIZE		DIMENSION <small>inch mm</small>							CRIMPING TOOL	Q'TY BOX
	BRAZED SEAM	BRAZED SEAM	d2		W	F	L	E	D	d1	T		
4 A.W.G. 22 mm ²	RNB22-10 *	SL22-10 *	3/8	.413 10.5	.650 16.5	.531 13.5	1.319 33.5					IZUMI MODEL 9H-60 (EP-38) WITH DIE INDEX NO:22 OR K.S. MODEL KH-120 LY-2045E WITH DIE INDEX NO:22 OR 25	250
	RNBL22-10	SL22-10L	3/8	.413 10.5	.689 17.5	.630 16.0	1.445 36.7						200
	RNB22-11	SL22-11	7/16	.453 11.5									200
	RNB22-12	SL22-12	1/2	.512 13.0	.866 22.0	.776 19.7	1.673 42.5						200
	RNB22-14	SL22-14	9/16	.591 15.0				.472 12.0	.453 11.5	.303 7.7	.067 1.7		200
	RNB22-16	SL22-16	5/8	.669 17.0	1.181 30.0	.953 24.2	2.008 51.0						200
	RNB22-18	SL22-18	11/16	.748 19.0									200
	RNB22-20	SL22-20	3/4	.827 21.0									200
2 A.W.G 38 mm ²	RNB38-5	SL38-5	#10	209 5 3								IZUMI MODEL 9H-60 (EP-38) WITH DIE INDEX NO 38 OR K.S. MODEL KH-120 WITH DIE INDEX NO 35	200
	RNBS38-6 *	SL38-6S *	1/4	252 6 4	602 15 3	685 17 4	1 535 39 0						200
	RNBL38-6	SL38-6L	1/4	252 6 4	866 22 0	697 17 7	1 681 42 7						200
	RNBS38-8 *	SL38-8S *	5/16	331 8 4	602 15 3	685 17 4	1 535 39 0						200
	RNBL38-8	SL38-8L	5/16	331 8 4	866 22 0	697 17 7	1 681 42 7						200
	RNBS38-10 *	SL38-10S *	3/8	413 10 5	602 15 3	685 17 4	1 535 39 0						200
	RNBL38-10	SL38-10L	3/8	413 10 5									200
	RNB38-11	SL38-11	7/16	453 11 5				551 14 0	524 13 3	370 9 4	071 1 8		200
	RNB38-12 *	SL38-12 *	1/2	512 13 0	866 22.0	697 17 7	1 681 42 7						200
	RNB38-13	SL38-13	9/16	551 14 0									200
	RNB38-14	SL38-14	9/16	591 15 0									200
	RNB38-16	SL38-16	5/8	669 17 0	1 181 30 0	917 23 3	2 047 52 0						200
	RNB22-18	SL22-18	11/16	748 19 0									200
	RNB38-20	SL38-20	3/4	827 21 0									200

ALL LISTED
 * ADDITIONAL CERTIFIED



NON-INSULATED RING TERMINALS



MAXIMUM ELECTRIC CURRENT

A.W.G.	1/0	2/0
AMP	230	265

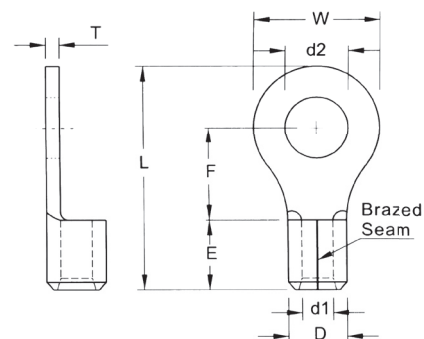
TERMINAL MATERIAL COPPER

WIRE RANGE A.W.G. mm ²	ITEM NO.		STUD SIZE		DIMENSION <small>inch mm</small>							CRIMPING TOOL	Q'TY BOX
	BRAZED SEAM	BRAZED SEAM	d2		W	F	L	E	D	d1	T		
1/0 A.W.G. 60 mm ²	RNB60-6	SL60-6	1/4	.252 6.4	.866 22.0	.315 20.7	1.957 49.7					IZUMI MODEL 9H-2 9H-150 12#A WITH DIE INDEX NO:60 OR K.S. MODEL KH-120 WITH DIE INDEX NO:50	100
	RNB60-8	SL60-8	5/16	.331 8.4									100
	RNB60-10	SL60-10	3/8	.413 10.5									100
	RNB60-11	SL60-11	7/16	.453 11.5									100
	RNB60-12	SL60-12	1/2	.512 13.0							100		
	RNB60-13	SL60-13	9/16	.551 14.0							100		
	RNB60-14	SL60-14	9/16	.591 15.0							100		
	RNB60-16	SL60-16	5/8	.669 17.0							100		
	RNB60-18	SL60-18	11/16	.748 19.0	1.260 32.0	.925 23.5	2.264 57.5		100				
	RNB60-20	SL60-20	3/4	.827 21.0					100				
	RNB60-22	SL60-22	7/8	.906 23.0					100				
2/0 A.W.G 70 mm ²	RNB70-6	SL70-6	1/4	.252 6.4	.945 24.0	.787 20.0	1.969 50.0					IZUMI MODEL 9H-2 9H-150 12#A WITH DIE INDEX NO:70 OR K.S. MODEL KH-150 WITH DIE INDEX NO:70	100
	RNB70-8	SL70-8	5/16	.331 8.4									100
	RNB70-10	SL70-10	3/8	.413 10.5									100
	RNB70-11	SL70-11	7/16	.453 11.5									100
	RNB70-12	SL70-12	1/2	.512 13.0							100		
	RNB70-13	SL70-13	9/16	.551 14.0							100		
	RNB70-14	SL70-14	9/16	.591 15.0							100		
	RNB70-16	SL70-16	5/8	.669 17.0							100		
	RNB70-18	SL70-18	11/16	.748 19.0	1.260 32.0	1.024 26.0	2.402 61.0		100				
	RNB70-20	SL70-20	3/4	.827 21.0					100				
	RNB70-22	SL70-22	7/8	.906 23.0					100				

UL cUL ALL LISTED



NON-INSULATED RING TERMINALS



MAXIMUM ELECTRIC CURRENT

A.W.G.	3/0	4/0
AMP	310	360

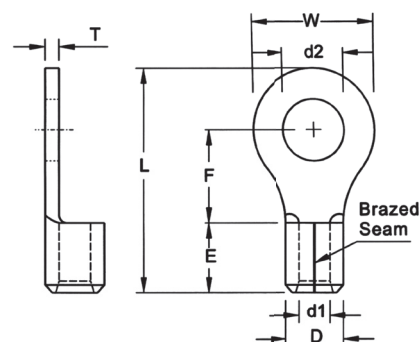
TERMINAL MATERIAL COPPER

WIRE RANGE A.W.G. mm ²	ITEM NO.		STUD SIZE		DIMENSION ^{inch} mm							CRIMPING TOOL	Q'TY BOX
	BRAZED SEAM	BRAZED SEAM	d2		W	F	L	E	D	d1	T		
3/0 A.W.G. 80 mm ²	RNB80-6	SL80-6	1/4	.252 6.4	1.063 27.0	.815 20.7	2.134 54.2	.787 20.0	.768 19.5	.571 14.5	.091 2.3	IZUMI MODEL 9H-2 9H-150 12#A WITH DIE INDEX NO:80 OR K.S. MODEL KH-150 WITH DIE INDEX NO:95	50
	RNB80-8	SL80-8	5/16	.331 8.4									50
	RNB80-10	SL80-10	3/8	.413 10.5									50
	RNB80-11	SL80-11	7/16	.453 11.5									50
	RNB80-12	SL80-12	1/2	.512 13.0									50
	RNB80-13	SL80-13	9/16	.551 14.0									50
	RNB80-14	SL80-14	9/16	.591 15.0	1.260 32.0	1.260 32.0	2.677 68.0				50		
	RNB80-16	SL80-16	5/8	.669 17.0							50		
	RNB80-18	SL80-18	11/16	.748 19.0							50		
	RNB80-20	SL80-20	3/4	.827 21.0							50		
	RNB80-22	SL80-22	7/8	.906 23.0							50		
4/0 A.W.G 100 mm ²	RNB100-6	SL100-6	1/4	.252 6.4	1.122 28.5	.803 20.4	2.189 55.6					IZUMI MODEL 9H-2 9H-150 12#A WITH DIE INDEX NO 100 OR K.S. MODEL KH-150 WITH DIE INDEX NO 120	50
	RNB100-8	SL100-8	5/16	.331 8.4									50
	RNB100-10	SL100-10	3/8	.413 10.5									50
	RNB100-11	SL100-11	7/16	.453 11.5									50
	RNB100-12	SL100-12	1/2	.512 13.0									50
	RNB100-14	SL100-14	9/16	.591 15.0									50
	RNB100-16	SL100-16	5/8	.669 17.0	1.260 32.0	1.260 32.0	2.717 69.0	.827 21.0	.870 22.1	.646 16.4	.106 2.7		50
	RNB100-18	SL100-18	11/16	.748 19.0									50
	RNB100-20	SL100-20	3/4	.827 21.0									50
	RNB100-22	SL100-22	7/8	.906 23.0									50

UL cUL ALL LISTED



NON-INSULATED RING TERMINALS



MAXIMUM ELECTRIC CURRENT

A.W.G.	250	300	350
AMP	405	445	505

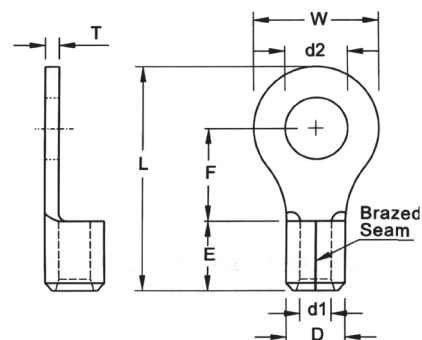
TERMINAL MATERIAL COPPER

WIRE RANGE A.W.G. mm ²	ITEM NO.		STUD SIZE		DIMENSION <small>inch mm</small>							CRIMPING TOOL	Q'TY BOX										
	BRAZED SEAM	BRAZED SEAM	d2		W	F	L	E	D	d1	T												
250/300 MCM 150 mm ²	RNB150-8	SL150-8	5/16	.331 8.4	1.417 36.0	.906 23.0	2.598 66.0	1.063 27.0	1.047 26.6	.768 19.5	.126 3.2	IZUMI MODEL 9H-2 9H-150 12#A WITH DIE INDEX NO:150 OR K.S. MODEL KSTP-150D WITH DIE INDEX NO:150	25										
	RNBL150-8	SL150-8L	5/16	.331 8.4		1.417 36.0	3.189 81.0						25										
	RNB150-10	SL150-10	3/8	.413 10.5		.906 23.0	2.598 66.0						25										
	RNBL150-10	SL150-10L	3/8	.413 10.5		1.417 36.0	3.189 81.0						25										
	RNB150-11	SL150-11	7/16	.453 11.5	.906 23.0	2.598 66.0	1.063 27.0						1.047 26.6	.768 19.5	.126 3.2	IZUMI MODEL 9H-2 9H-150 12#A WITH DIE INDEX NO:150 OR K.S. MODEL KSTP-150D WITH DIE INDEX NO:150	25						
	RNB150-12	SL150-12	1/2	.512 13.0													1.417 36.0	3.189 81.0	25				
	RNBL150-12	SL150-12L	1/2	.512 13.0													1.417 36.0	3.189 81.0	25				
	RNB150-14	SL150-14L	9/16	.591 15.0															.906 23.0	2.598 66.0	25		
	RNB150-16	SL150-16L	5/8	.669 17.0	1.417 36.0	1.417 36.0											3.189 81.0	1.063 27.0			1.047 26.6	.768 19.5	.126 3.2
	RNBL150-16	SL150-16L	5/8	.669 17.0															25				
	RNB150-18	SL150-18L	11/16	.748 19.0															25				
	RNB150-20	SL150-20L	3/4	.827 21.0															25				
	RNB150-22	SL150-22L	7/8	.906 23.0															25				
	RNB150-24	SL150-24L	15/16	.984 25.0															25				
	RNB150-27	SL150-27L	1	1.102 28.0															25				
300/350 MCM 180 mm ²	RNB180-8	SL180-8	5/16	.331 8.4				1.516 38.5	.965 24.5	2.717 69.0	1.122 28.5	1.126 28.6							.827 21.0	.138 3.5			
	RNB180-10	SL180-10	3/8	.413 10.5	10																		
	RNB180-11	SL180-11	7/16	.453 11.5	10																		
	RNB180-12	SL180-12	1/2	.512 13.0	10																		
	RNBL180-12	SL180-12L	1/2	.512 13.0	1.535 39.0	3.409 86.6	10																
	RNB180-14	SL180-14L	9/16	.591 15.0	.965 24.5	2.717 69.0	10																
	RNB180-16	SL180-16L	5/8	.669 17.0			10																
	RNB180-18	SL180-18L	11/16	.748 19.0			1.535 39.0		3.409 86.6	10													

UL cUL ALL LISTED



NON-INSULATED RING TERMINALS



MAXIMUM ELECTRIC CURRENT

A.W.G.	300	350	400	500	600
AMP	445	505	545	620	690

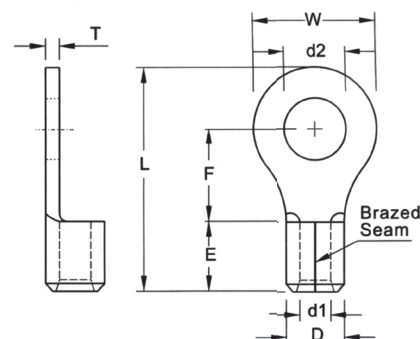
TERMINAL MATERIAL COPPER

WIRE RANGE A.W.G. mm ²	ITEM NO.		STUD SIZE		DIMENSION ^{inch} mm							CRIMPING TOOL	Q'TY BOX
	BRAZED SEAM	BRAZED SEAM	d2		W	F	L	E	D	d1	T		
300/350 MCM 180 mm ²	RNB180-20	SL180-20L	3/4	.827 21.0	1.516 38.5	1.535 39.0	3.409 86.6	1.122 28.5	1.126 28.6	.827 21.0	.138 3.5	IZUMI MODEL 12K 1 12#A WITH DIE INDEX NO 180 OR K.S MODEL KSTP 150D WITH DIE INDEX NO-180	10
	RNB180-22	SL180-22L	7/8	.906 23.0									10
	RNB180-24	SL180-24L	15/16	.984 25.0									10
	RNB180-27	SL180-27L	1	1.102 28.0									10
400/500 MCM 200 mm ²	RNB200-8	SL200-8	5/16	.331 8.4	1.732 44.0	.965 24.5	2.835 72.0	1.240 31.5	1.283 32.6	.945 24.0	.157 4.0	IZUMI MODEL 12K-1 12#A WITH DIE INDEX NO:200 OR K.S. MODEL KSTP-325 WITH DIE INDEX NO:240	10
	RNBL200-8	SL200-8L	5/16	.331 8.4									10
	RNB200-10	SL200-10	3/8	.413 10.5									10
	RNB200-11	SL200-11	7/16	.453 11.5									10
	RNB200-12	SL200-12	1/2	.512 13.0									10
	RNBL200-12	SL200-12L	1/2	.512 13.0									10
	RNB200-14	SL200-14	9/16	.591 15.0									10
	RNB200-16	SL200-16	5/8	.669 17.0									10
	RNBL200-16	SL200-16L	5/8	.669 17.0									10
	RNB200-18	SL200-18L	11/16	.748 19.0									10
	RNB200-20	SL200-20L	3/4	.827 21.0									10
	RNB200-22	SL200-22L	7/8	.906 23.0									10
	RNB200-24	SL200-24L	15/16	.984 25.0									10
	RNB200-27	SL200-27L	1	1.102 28.0									10
500/600 MCM 325 mm ²	RNB325-8	SL325-8	5/16	.331 8.4	1.988 50.5	1.319 33.5	3.465 88.0	1.398 33.5	1.480 37.6	1.102 28.0	.169 4.3	IZUMI MODEL 12K 1 12#A WITH DIE INDEX NO 325 OR K S MODEL KSTP-325 WITH DIE INDEX NO 400	5
	RNB325-10	SL325-10	3/8	.413 10.5									5
	RNB325-11	SL325-11	7/16	.453 11.5									5
	RNB325-12	SL325-12	1/2	.512 13.0									5

UL cUL ALL LISTED



NON-INSULATED RING TERMINALS



MAXIMUM ELECTRIC CURRENT

A.W.G.	500	600
AMP	620	690

TERMINAL MATERIAL COPPER

WIRE RANGE A.W.G. mm ²	ITEM NO.		STUD SIZE		DIMENSION ^{inch} mm							CRIMPING TOOL	Q'TY BOX
	BRAZED SEAM	BRAZED SEAM	d2		W	F	L	E	D	d1	T		
500/600 MCM	RNBL325-12	SL325-12L	1/2	512 13 0	1 988 50 5	1 772 45 0	4 161 105.7					IZUMI MODEL 12K 1 12#A WITH DIE INDEX NO 325 OR K.S MODEL KSTP-325 WITH DIE INDEX NO 400	5
	RNB325-14	SL325-14	9/16	591 15 0									5
	RNB325-16	SL325-16	5/8	669 17 0		1 319 33 5	3 465 88 0						5
	RNBL325-16	SL325-16L	5/8	669 17 0	1 988 50 5								5
325 mm ²	RNB325-18	SL325-18L	11/16	748 19 0				1.398 35.5	1 480 37 6	1 102 28 0	169 4 3		5
	RNB325-20	SL325-20L	3/4	827 21 0		1 772 45 0	4 161 105.7						5
	RNB325-22	SL325-22L	7/8	906 23 0									5
	RNB325-24	SL325-24L	15/16	984 25 0									5
	RNB325-27	SL325-27L	1	1 102 28 0									5

UL cUL ALL LISTED