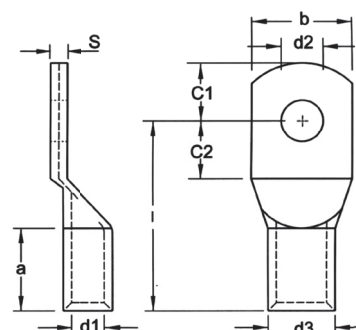




NON-INSULATED COPPER TUBULAR LUGS(TLK SERIES)



MAXIMUM ELECTRIC CURRENT

A.W.G.	18	16	14	12	10
AMP	17	18	30	35	50

TERMINAL MATERIAL COPPER TUBULAR

WIRE RANGE A.W.G. mm ²	ITEM NO.	DIMENSION mm									CRIMPING TOOL	Q'TY BOX	
		a	b	C1	C2	d1	d2	d3	l	S			
18 A.W.G. 0.75 mm ²	TLK0.75-3	6.0	6.0	3.2	4.0	1.3	3.2	2.8	12.0	0.7		1000	
	TLK0.75-4		6.5	4.0	5.0		4.3		13.0			1000	
	TLK0.75-5		7.5	7.5	5.5		5.3		14.0			1000	
16 A.W.G 1.5 mm ²	TLK1.5-3	6.0	6.5	3.2	4.0	1.8	3.2	3.3	12.0	0.8		1000	
	TLK1.5-4			4.0	5.0		4.3		13.0			1000	
	TLK1.5-5		7.5	4.7	5.5		5.3		14.0			1000	
	TLK1.5-6		9.0	6.5	6.5		6.4		16.0			1000	
14 A.W.G. 2.5 mm ²	TLK2.5-3	6.0	7.5	3.2	4.0	2.3	3.2	4.2	12.0	1.25		1000	
	TLK2.5-4			4.0	5.0		4.3		13.0			1000	
	TLK2.5-5		8.5	4.7	5.5		5.3		14.0			1000	
	TLK2.5-6		9.5	6.5	6.5		6.4		16.0			1000	
	TLK2.5-8		13.0	7.7	9.5		8.4		20.0			1000	
12 A.W.G 4.0 mm ²	TLK4-4	8.0	8.5	4.7	5.5	3.0	4.3	5.0	17.0			1000	
	TLK4-5		9.0		6.0		5.3					1000	
	TLK4-6		10.0	6.5	6.5		6.4		19.0			1000	
	TLK4-8		13.0	8.5	9.5		8.4		22.0			1000	
12-10 A.W.G. 6.0 mm ²	TLK6-4	9.0	10.0	5.0	7.5	3.5	4.3	6.5	20.0	2.4	K.S. MODEL LY-2045D WITH DIE INDEX NO:5.5	500	
	TLK6-5		10.0	6.5			5.5		21.0				500
	TLK6-6		12.0				6.5					1.9	500
	TLK6-8		15.0	10.0	10.0		8.4		23.0	1.5		500	
	TLK6-10		17.0	12.0	12.0		10.5		25.0	1.3		500	
	TLK6-12		19.0	13.0	13.0		13.0		28.0	1.2		500	

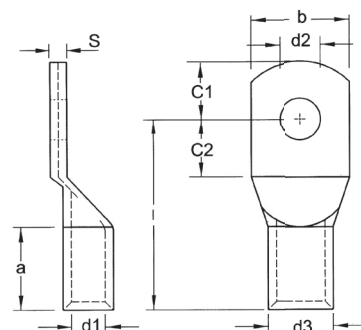


ALL LISTED

© NOT UL AND C-UL LISTED



NON-INSULATED COPPER TUBULAR LUGS(TLK SERIES)



MAXIMUM ELECTRIC CURRENT

A.W.G.	8	6	4	2
AMP	70	95	125	170

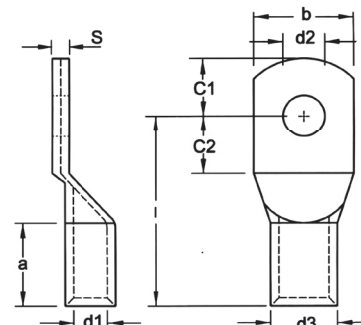
TERMINAL MATERIAL. COPPER TUBULAR

WIRE RANGE A.W.G. mm ²	ITEM NO.	DIMENSION mm									CRIMPING TOOL	Q'TY BOX
		a	b	C1	C2	d1	d2	d3	l	S		
8 A.W.G 10 mm ²	TLK10-4	10.0	12.0	7.5	7.5	4.6	4 3	7 0	21.0	1.8	K.S MODEL LY-2045D WITH DIE INDEX NO 8	500
	TLK10-5			6.5			5 5		22.0			500
	TLK10-6						6 4		25 0			500
	TLK10-8		15 0	10 0	10 0		8 4	27 0	1 5	500		
	TLK10-10		17 0	12 0	12 0		10 5	29 0	1 3	500		
	TLK10-12		19 0	13 0	13 0		13 0			500		
6 A.W.G. 16 mm ²	TLK16-5	13.0	12.0	5.5	6.5	5.5	5.5	8.5	26.0	2.8	NOVOPRESS MODEL HPM 400	250
	TLK16-6			6.25	7.5		6.4		27.0			250
	TLK16-8		15.0	8.5	9.5		8.4		29.0	2.1		250
	TLK16-10		17.0	10.5	11.5		10.5		31.0	2.0		250
	TLK16-12		19.0	12.0	13.0		13.0		33.0	1.5		250
4 A.W.G 25 mm ²	TLK25-5	15.0	14.0	7 5	7.5	7.0	5 5	10 0	30.0	2.8	NOVOPRESS MODEL HPM 400	200
	TLK25-6						6 4					200
	TLK25-8		16 0	10 0	10 0		8 4		32 0	2 4		200
	TLK25-10		18 0	12 0	12 0		10 5		34 0	2 2		200
	TLK25-12		19 0	13 0	13 0		13 0		35 0	2 1		200
	TLK25-14		21 0	14 5	14 5		15 0		38 0	1 9		200
2 A.W.G. 35 mm ²	TLK35-6	17.0	17.0	7.5	7.5	8.5	6.4	12.0	32.0	3.2	NOVOPRESS MODEL HPM 400	200
	TLK35-8			10.0	10.0		8.4		34.0			200
	TLK35-10		19.0	12.0	12.0		10.5		37.0	2.9		200
	TLK35-12		21.0	13.0	13.0		13.0		38.0	2.6		200
	TLK35-14			14.5	14.5		15.0		40.0			200
	TLK35-16			26.0	16.0		16.0		17.0	42.0		2.2

Ⓢ Ⓢ ALL LISTED



NON-INSULATED COPPER TUBULAR LUGS(TLK SERIES)



MAXIMUM ELECTRIC CURRENT:

A.W.G.	1/0	2/0	3/0
AMP.	230	265	310

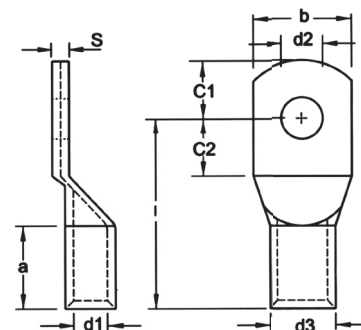
TERMINAL MATERIAL: COPPER TUBULAR

WIRE RANGE A.W.G. mm ²	ITEM NO.	DIMENSION mm									CRIMPING TOOL	Q'TY BOX
		a	b	C1	C2	d1	d2	d3	l	s		
1/0 A.W.G. 50 mm ²	TLK50-6	19.0	20.0	10.0	10.0	10.0	6.4	14.0	3.7	3.3	NOVOPRESS MODEL HPM 400	100
	TLK50-8			12.0	12.0		8.4		3.7			100
	TLK50-10			13.0	13.0		10.5		3.3			100
	TLK50-12		23.0	13.0	13.0		13.0		43.0			100
	TLK50-14			14.5	14.5		15.0		45.0			100
	TLK50-16			16.0	16.0		17.0		46.0	2.7		100
	TLK50-20			19.0	19.0		21.0		48.0	2.5		100
2/0 A.W.G. 70 mm ²	TLK70-6	21.0	23.0	10.0	10.0	12.0	6.4	16.5	43.0	4.3	NOVOPRESS MODEL HPM 400	100
	TLK70-8			12.0	12.0		8.4		44.0			100
	TLK70-10			13.0	13.0		10.5		46.0			100
	TLK70-12		28.0	13.0	13.0		13.0		48.0			100
	TLK70-14			14.5	14.5		15.0		50.0	3.5		100
	TLK70-16			16.0	16.0		17.0		53.0	3.4		100
	TLK70-20			19.0	19.0		21.0		53.0	3.4		100
3/0 A.W.G. 95 mm ²	TLK95-6	25.0	26.0	12.0	12.0	13.5	6.4	18.0	48.0	4.2	NOVOPRESS MODEL HPM 400	50
	TLK95-8			13.0	13.0		8.4		49.0			50
	TLK95-10			14.5	14.5		10.5		51.0			50
	TLK95-12		28.0	13.0	13.0		13.0		54.0	4.0		50
	TLK95-14			14.5	14.5		15.0		54.0	4.0		50
	TLK95-16			16.0	16.0		17.0		60.0	3.0		50
	TLK95-20			22.0	22.0		21.0		60.0	3.0		50

UL cUL ALL LISTED



NON-INSULATED COPPER TUBULAR LUGS(TLK SERIES)



MAXIMUM ELECTRIC CURRENT:

A.W.G.	4/0	250	300	350	400
AMP.	360	405	445	505	545

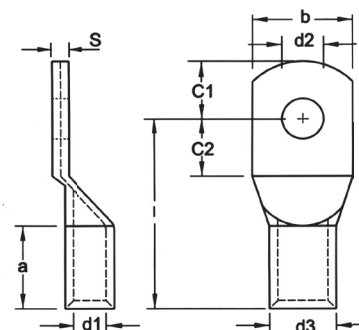
TERMINAL MATERIAL: COPPER TUBULAR

WIRE RANGE A.W.G. mm ²	ITEM NO.	DIMENSION mm									CRIMPING TOOL	Q'TY BOX
		a	b	C1	C2	d1	d2	d3	I	S		
4/0 A.W.G. 120 mm ²	TLK120-8	26.0	28.0	14.0	14.0	15.0	8.4	19.5	51.0	4.3	NOVOPRESS MODEL HPM 400	25
	TLK120-10						10.5					25
	TLK120-12			13.0	25							
	TLK120-14			15.0	15.0		52.0		25			
	TLK120-16		30.0	16.0	16.0	17.0	54.0	4.0	25			
	TLK120-20		36.0	22.0	22.0	21.0	63.0	3.5	25			
250/300 MCM 150 mm ²	TLK150-8	30.0	31.0	14.0	14.0	16.5	8.4	21.0	56.0	4.3	NOVOPRESS MODEL HPM 400	25
	TLK150-10						10.5					25
	TLK150-12			13.0	57.0		25					
	TLK150-14			15.0	58.0		25					
	TLK150-16		16.0	16.0	17.0	66.0	3.6	25				
	TLK150-20		36.0	22.0	22.0	21.0	66.0	3.6	25			
300/350 MCM 185 mm ²	TLK185-10	30.0	35.0	18.0	18.0	19.0	10.5	24.0	65.0	4.7	NOVOPRESS MODEL HPM 400	10
	TLK185-12						13.0					10
	TLK185-14						15.0					10
	TLK185-16						17.0					10
	TLK185-20		39.0	22.0	22.0	21.0	69.0	4.3	10			
400 MCM 240 mm ²	TLK240-10	35.0	39.0	21.5	19.0	21.0	10.5	26.0	72.0	4.8	NOVOPRESS MODEL HPM 400	10
	TLK240-12						13.0					10
	TLK240-14						15.0					10
	TLK240-16						17.0					10
	TLK240-20						21.0					10

UL cUL ALL LISTED



NON-INSULATED COPPER TUBULAR LUGS(TLK SERIES)



MAXIMUM ELECTRIC CURRENT:

A.W.G.	500	600	700	750
AMP.	620	690	755	785

TERMINAL MATERIAL: COPPER TUBULAR

WIRE RANGE A.W.G. mm ²	ITEM NO.	DIMENSION mm									CRIMPING TOOL	Q'TY BOX
		a	b	C1	C2	d1	d2	d3	l	S		
500 MCM 300 mm ²	TLK300-12	44.0	43.0	24.0	24.0	23.5	13.0	29.5	87.0	5.9	NOVOPRESS MODEL HPM 400	5
	TLK300-14						15.0					5
	TLK300-16						17.0					5
	TLK300-20						21.0					5
600/750 MCM 400 mm ²	TLK400-12	44.0	49.0	24.0	24.0	27.0	13.0	34.0	90.0	6.8	NOVOPRESS MODEL HPM 400	5
	TLK400-14						15.0					5
	TLK400-16						17.0					5
	TLK400-20						21.0					5

UL cUL ALL LISTED